



## Thor

## Planters

### Product Details

Natural Stone  
Packed 1 piece per carton  
Eco Friendly  
Stain Resistant  
Water Resistant  
Available in 8 Colors  
10 - 12 Weeks

This item is handcrafted so there may be texture differences in each product. No coloring agent is used, it does not peel or fade. Highly resistant to impacts and weight, thanks to its production method and material. It is more durable than cast concrete, industrial wood, glass, ceramic or plastic products.

### Dimensions

TR4559L: 17.5in x 17.5in x 23in  
45cm x 45cm x 59cm  
TR6180XL: 24in x 24in x 31.5in  
61cm x 61cm x 80cm  
TR61100XXL: 24in x 24in x 39.5in  
61cm x 61cm x 100cm

### Weight

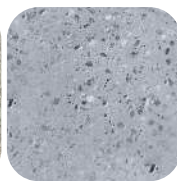
TR4559L: 31lb | 14kg  
TR6180XL: 79lb | 36kg  
TR61100XXL: 88lb | 40kg



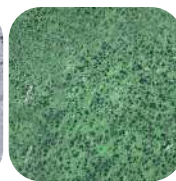
Anthracite



Cream



Gray



Green



Maroon



Red



White



Yellow

# kalif