



## Rectangle Wide

## Fire Pit

### Product Details

Natural Stone  
Packed 1 piece per carton  
Eco Friendly  
Stain Resistant  
Water Resistant  
Available in 8 Colors  
10 - 12 Weeks

### Dimensions

RC12040L: 47in x 31.5in x 15.5in  
120cm x 80cm x 40cm  
RC16040XL: 63in x 35.5in x 15.5in  
160cm x 90cm x 40cm  
RC18040XXL: 71in x 35.5in x 15.5in  
180cm x 90cm x 40cm

This item is handcrafted so there may be texture differences in each product. No coloring agent is used, it does not peel or fade. Highly resistant to impacts and weight, thanks to its production method and material. It is more durable than cast concrete, industrial wood, glass, ceramic or plastic products.

### Weight

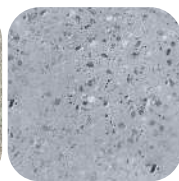
RC12040L: 93lb | 42kg  
RC16040XL: 132lb | 60kg  
RC18040XXL: 146lb | 66kg



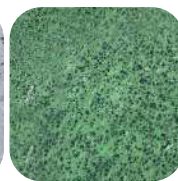
Anthracite



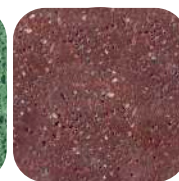
Cream



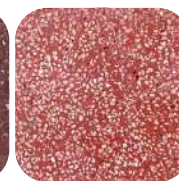
Gray



Green



Maroon



Red



White



Yellow

# kalif

# Instructions

---

Since this product is flammable, the instructions for use must be followed.

What is included?

- Burner
- Decorative Rocks
- Glass & handles
- Flat fire extinguisher



- 
- Do not use any fuel other than bioethanol.
  - Put a minimum of 1 L of fuel into the fuel tank of the fire pit.
  - To prevent the fuel from causing damage to the product surface, it is recommended to use a funnel when filling the fuel reservoir. In case of any fuel splashes on the product surface, it is advisable to clean it as soon as possible.
  - If used outdoors, keep the product covered to prevent the fuel tank of the fire pit from getting water.
  - Do not touch the glass and metal parts while the fire is burning.
  - Do not pour fuel directly onto the fire while it is burning.
  - Do not carry the product while the fire is burning.
  - Extinguish the fire only with "Fire Extinguisher".
  - Never pour water on the fire.

## Fuel capacity and heat area

---

- Design Burner 60cm
- Fuel capacity: 4.8 L
- Heat field: 40.0 m<sup>2</sup>