



KALiF
design

2024 collection



A SQUARED

2024





Kalif Design is a global brand with Turkish roots, that develops and sells plant pots, tables and outdoor furniture, by using lightweight fiberstone material. As of 2018, since our foundation, we aim for an extensive assortment that is based on the belief that design should be available for everyone. That is why we are always looking for the perfect balance between design, quality and price.

Our head quarters and factory are based in Istanbul, Turkey. Our products are available worldwide. Customers vary from gardeners, wholesalers, garden centers, landscapers, garden architects, architecture firms, furniture stores to florists.





KALIF
design

A SQUARED:

+1 786 501 8808



design@asquareddesignstudio.com



@asquareddesgnstudio



www.asquareddesignstudio.com



Address:

6756 NE 4th Avenue
Miami, Florida, 33138
USA

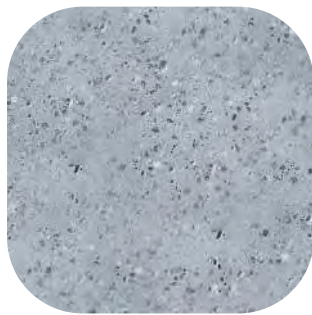
color index

all products in this catalog can
be produced with either of
these colors of our material.

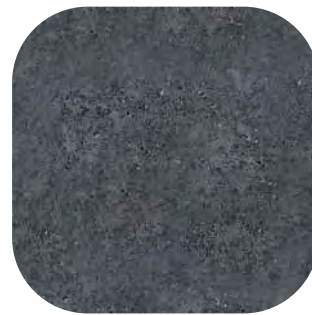
white



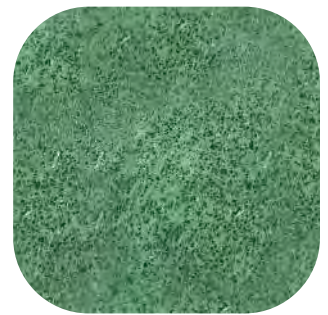
gray



anthracite



green



cream



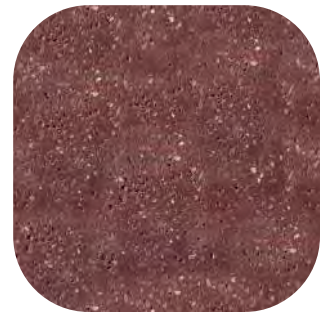
yellow




red

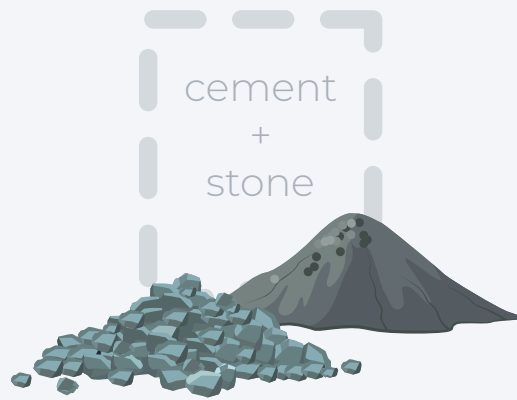


maroon





**our
material
is ...**



natural material



made out of
stonedust, no paint



elastic isolation



polished



extremely durable



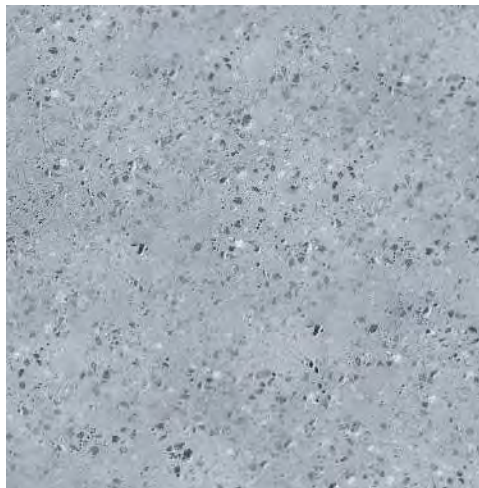
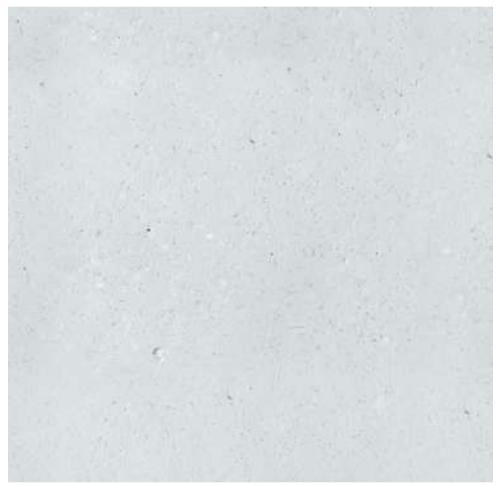
massively light



stays the same for years



resistant on any season



contents

| | |
|---------------|------------|
| collections | 14 |
| pots | 30 |
| tables | 120 |
| firepits | 158 |
| coffee tables | 204 |
| seats | 254 |
| stools | 266 |
| benches | 276 |
| night stands | 280 |
| tv units | 288 |



van gogh

Colorful and cheerful world of Van Gogh comes to your living room. We specifically chose some products of our own to match your best Van Gogh paintings. You can view details of the products in this collection in the next pages.





products in van gogh collection



Pluto **M** (pot)

Page: 32



Pluto **L** (pot)

Page: 32



Rhea **XS** (pot)

Page: 94



Frigg **XL** (table)

Page: 122



Miryo **XL** (coffee table)

Page: 246



Miryo **S** (coffee table)

Page: 246



Sweet Stool (stool)

Page: 270



Armin (tv unit)

Page: 301



heaven

This collection contains some of our products that you can use in your garden. The products we have chosen for this collection have rigid characteristics. If you like simple and solid, you can view details of the products in this collection in the next pages.





products in heaven collection



Cube **L1** (pot)

Page: 110



Cube **L2** (pot)

Page: 110



Cube **L3** (pot)

Page: 110



Rod **XL** (table)

Page: 126



Sedna **M** (coffee table)

Page: 206



Helios **1** (seating)

Page: 260



Helios **2** (seating)

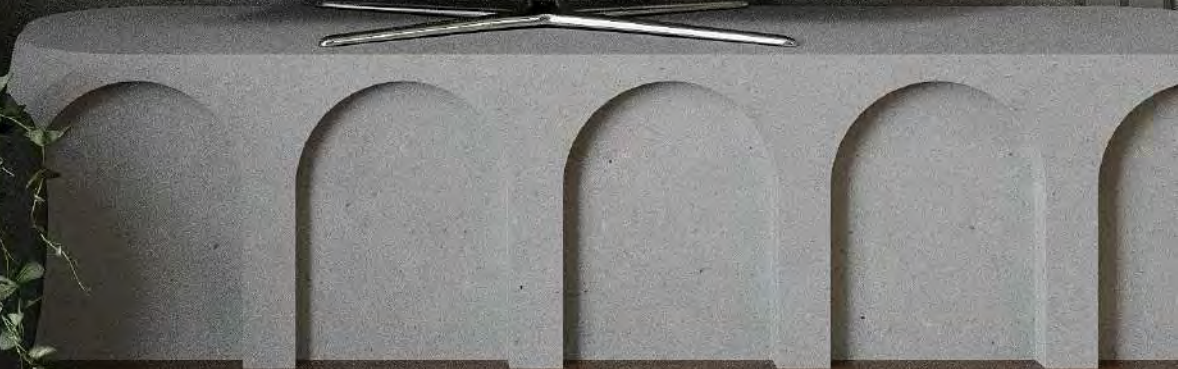
Page: 260



ara güler

With dark but also livable style paintings of Ara Güler, we put together some of our best products in a collection for your living room. You can view details of the products in this collection in the next pages.





products in ara güler collection



Ares **S** (pot)

Page: 44



Lucina **M** (pot)

Page: 44



Damu **S** (pot)

Page: 60



Damu **M** (pot)

Page: 60



Thor **XL** (pot)

Page: 66



Gaia **L** (table)

Page: 142



Ruda **S** (coffee table)

Page: 208



Ruda **M** (coffee table)

Page: 208



Philip (stool)

Page: 272



Arsu (tv unit)

Page: 290



aubrey beardsley

If you want to go for a minimal and less cheerful of color style for your living room, check this collection of ours! Even though there are a lot of curves, these products are as calm as you need them to be. You can view details of the products in this collection in the next pages.





products in aubrey beardsley collection



Lucina **M** (pot)

Page: 36



Lucina **L** (pot)

Page: 36



Ra **L** (pot)

Page: 76



Serapis **XL** (table)

Page: 128



Tilla **M** (coffee table)

Page: 214



Athena **L** (seating)

Page: 256



Minerva **M** (seating)

Page: 258



Eros (stool)

Page: 268



Round Stool (stool)

Page: 271



Pandora **L** (tv unit)

Page: 292

pots



| | | | |
|---------|-----------|-----------|------------|
| pluto | 32 | ra | 76 |
| feronia | 34 | artemis | 78 |
| lucina | 36 | apollo | 80 |
| aurora | 38 | apis | 82 |
| aja | 40 | horus | 84 |
| mors | 42 | anubis | 86 |
| ares | 44 | terra | 88 |
| pixie | 46 | vesta | 90 |
| ikarus | 48 | diana | 92 |
| griffin | 50 | rhea | 94 |
| ash | 52 | indra | 96 |
| tuna | 54 | tapio | 98 |
| doris | 56 | flora | 100 |
| ethos | 58 | aure | 102 |
| damu | 60 | pan | 104 |
| peri | 62 | freya | 106 |
| ziva | 64 | cylinder | 108 |
| thor | 66 | cube | 110 |
| golem | 68 | separator | 112 |
| atlas | 70 | odin | 114 |
| hina | 72 | loki | 116 |
| sia | 74 | | |



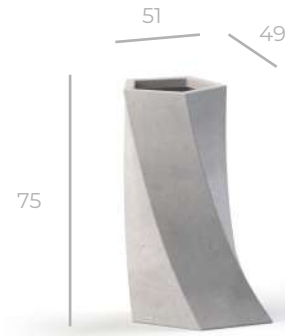


pluto

ruler of the underworld



M



L

“Pluto was also known as the **giver of wealth** from the underworld.”

In ancient Greek religion and mythology, Pluto was the ruler of the Greek underworld.

Pluto represents a more positive concept of the god who presides over the afterlife.

Πλούτων

| | code | dimensions (in cm) | liter | weight |
|---|----------|--------------------|-------|--------|
| M | PTO5355M | L 53 x W 52 x H 55 | 60 L | 16 kg |
| L | PTO5175L | L 51 x W 49 x H 75 | 62 L | 24 kg |





feronia

goddess who granted freedom to slaves



S



M



L

“As the goddess who granted, **freedom to slaves**, she was honored.”

In ancient Roman religion, Feronia was a goddess associated with wildlife, fertility, health, and abundance.

Feronia’s shrines were all located in the wild, far from human settlements. Varro, however, places Feronia in his list of Sabine gods who had altars in Rome.

FERONIA

| code | dimensions (in cm) | liter | weight |
|------------|---------------------|-------|--------|
| S FN6440S | L 64 x W 64 x H 40 | 95 L | 28 kg |
| M FN4774M | L 47 x W 47 x H 74 | 96 L | 32 kg |
| L FN54100L | L 54 x W 50 x H 100 | 150 L | 36 kg |





Lucina
the light of the moon



M



L

“Under the moonlight, she helps women receive **their greatest children.**”

In ancient Roman religion, Lucina was a title or epithet given to the goddess Juno, and sometimes to Diana, in their roles as goddesses of childbirth who safeguarded the lives of women in labor.

LUCINA

| code | dimensions (in cm) | liter | weight |
|--------------|---------------------|-------|--------|
| M LCNO4776M | L 47 x W 47 x H 76 | 78 L | 33 kg |
| L LCNO47100L | L 47 x W 47 x H 100 | 94 L | 40 kg |





aurora

only found in the poems



“Like it arrived from **any poem written** to the world.”

Aurora is the goddess of dawn in Roman mythology and Latin poetry.

In Roman mythology, Aurōra renews herself every morning and flies across the sky, announcing the arrival of the Sun.

AURORA

| code | dimensions (in cm) | liter | weight |
|------------------------|---------------------|-------|--------|
| M ARR6040M | L 60 x W 60 x H 40 | 83 L | 20 kg |
| L ARR8030L | L 80 x W 80 x H 30 | 110 L | 26 kg |
| XL ARR6060XL | L 60 x W 60 x H 60 | 130 L | 44 kg |
| XXL ARR60100XXL | L 60 x W 60 x H 100 | 220 L | 49 kg |





aja

orisha of the forests



S



L

“The spirit of the forest, **watches it from afar** to ensure the rulership.”

If someone is carried away by Aja and then returns, they become a powerful “jujuman”.

She sees forests as the life of other gods, thus she have to protect them to have more life on Earth. She also goes by the name “wild wind.”

اجا

| code | dimensions (in cm) | liter | weight |
|-----------|--------------------|-------|--------|
| S AJ5049S | L 50 x W 50 x H 49 | 58 L | 16 kg |
| L AJ8280L | L 82 x W 82 x H 80 | 254 L | 72 kg |





mors

personification of death

pot and a side table



“Death **enlightens** the room one last time, before it is too late.”

In ancient Roman myth and literature, Mors (also known as Letum) is the personification of death.

The Latin noun for “death”, mors, genitive mortis, is of feminine gender, but surviving ancient Roman art is not known to depict Death as a woman.

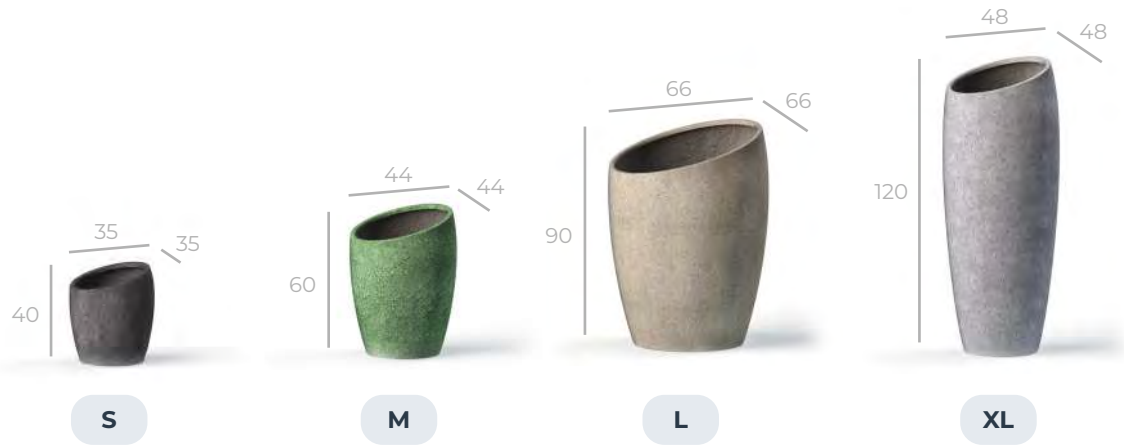
MORS

| | code | dimensions (in cm) | liter | weight |
|---|-----------|----------------------|-------|--------|
| M | MO585347M | L 58.5 x W 53 x H 47 | 66 L | 37 kg |
| L | MO696038L | L 69 x W 60 x H 38 | 72 L | 38 kg |



ares

god of courage and war



“After all the wars have done, there came to time to **rest for the remaining times**. Not that you need a reason, of course.”

Ares, the Greek god of war. Treated as an outcast among the Twelve Olympians, the result of this would be that he became a furious god of war. He felt isolated in a corner.

Even he has a Areopagus (“mount of Ares”) of his own.

Apns

| code | dimensions (in cm) | liter | weight |
|---------------------|---------------------|-------|--------|
| S AR3540S | L 35 x W 35 x H 40 | 26 L | 9 kg |
| M AR4460M | L 44 x W 44 x H 60 | 63 L | 16 kg |
| L AR6690L | L 66 x W 66 x H 90 | 220 L | 36 kg |
| XL AR48120XL | L 48 x W 48 x H 120 | 159 L | 33 kg |





pixie

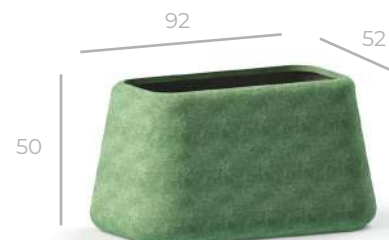
little people of the Earth



S



M



L

“Protecting the balance of the **nature**, but **mostly wood.**”

A pixie is a mythical creature of British folklore.

Akin to the Irish and Scottish Aos Sí (also spelt Aos Sidhe), pixies are believed to inhabit ancient underground ancestor sites such as stone circles, barrows, dolmens, ringforts or menhirs.

pixie

| code | dimensions (in cm) | liter | weight |
|-------------|--------------------|-------|--------|
| S PX525250S | L 52 x W 52 x H 50 | 89 L | 22 kg |
| M PX525280M | L 52 x W 52 x H 80 | 144 L | 32 kg |
| L PX529250L | L 52 x W 92 x H 50 | 175 L | 36 kg |





ikarus

insatiable child of Crete



“The myth rised the idiom, don't fly too close to **the sun**, but he always did.”

In Greek mythology, he was the son of the master craftsman Daedalus, the creator of the Labyrinth.

Icarus kept flapping his “wings”, but he had no feathers left and was only flapping his bare arms.

Ίκαρος

| code | dimensions (in cm) | liter | weight |
|-----------------------|----------------------|-------|--------|
| S IS464740S | L 46 x W 47.5 x H 40 | 51 L | 13 kg |
| M IS746660M | L 74 x W 66.5 x H 60 | 150 L | 20 kg |
| L IS869080L | L 86 x W 90 x H 80 | 364 L | 42 kg |
| XL IS6062120XL | L 60 x W 62 x H 120 | 240 L | 46 kg |





griffin

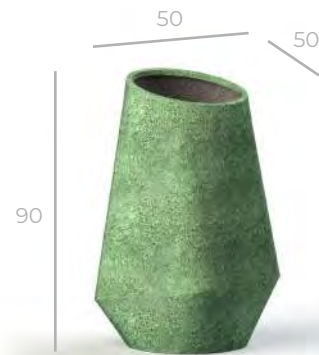
protector of the golden eggs



M



L



XL

“Not only mated for life, but if either partner died, then the other would not choose **go on living.**”

Griffin creatures are born from golden eggs and their mates are decided when it happens. Two partners are always born at the same time and the markings on their eggs tell their story to each other.

They promise an eternity.

γρῦψ

| code | dimensions (in cm) | liter | weight |
|--------------------|----------------------|--------|--------|
| M GR5065M | L 50 x W 50 x H 65 | 96.5 L | 15 kg |
| L GR5077L | L 50 x W 50 x H 77.5 | 112 L | 20 kg |
| XL GR5090XL | L 50 x W 50 x H 90 | 146 L | 24 kg |





ash
lord of Libya



“Depicted as a **human living in a city**, whose head was one of the desert creatures.”

It is green, it is natural, it is a reflection of Mother Nature. Ash. The pot has its name from Egyptian mythology, the god of oases.



| code | dimensions (in cm) | liter | weight |
|-----------------------|------------------------|-------|---------|
| S AH6650S | L 66.5 x W 66.5 x H 50 | 164 L | 27.5 kg |
| M AH5360M | L 53 x W 53 x H 60 | 121 L | 18 kg |
| L AH7180L | L 71 x W 71 x H 80 | 218 L | 39 kg |
| XL AH8680XL | L 86.5 x W 86.5 x H 80 | 347 L | 50 kg |
| XXL AH88100XXL | L 88 x W 88 x H 100 | 426 L | 80 kg |





tuna

controller of eels



“For the god, eels come from the **water of the seen.**”

In Polynesian mythology, Tuna is a god of eels. He fights with Māui, who is having an affair with his wife Hina. Māui kills him for revenge.

The eels help him carry on his life, which goes on near a water somewhere.

tuna

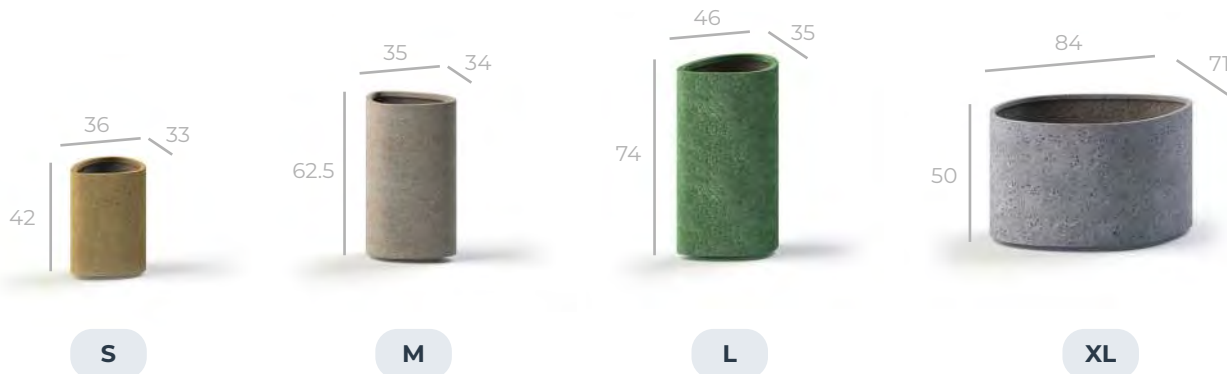
| code | dimensions (in cm) | liter | weight |
|---------------------|----------------------|-------|--------|
| S TN5040S | L 50 x W 50 x H 40 | 47 L | 14 kg |
| M TN6450M | L 64 x W 64 x H 50 | 100 L | 22 kg |
| L TN10060L | L 100 x W 100 x H 60 | 292 L | 44 kg |
| XL TN70120XL | L 70 x W 70 x H 120 | 278 L | 46 kg |





doris

one of the 3,000 Oceanids



“**Summer sun** was a brightening for her.”

In Greek mythology, was a sea goddess. She was one of the 3,000 Oceanids, daughters of the Titans Oceanus and Tethys.

Her name is connected with two words: Dôron meaning “gift” or “abundance,” and Zôros, meaning the “pure” and “unmixed.”

Δωρίδος

| code | dimensions (in cm) | liter | weight |
|----------------------|----------------------|--------|--------|
| S DR363342S | L 36 x W 33 x H 42 | 27.5 L | 21 kg |
| M DR353462M | L 35 x W 34 x H 62.5 | 42 L | 28 kg |
| L DR463574L | L 46 x W 35 x H 74 | 72 L | 49 kg |
| XL DR847150XL | L 84 x W 71 x H 50 | 200 L | 67 kg |



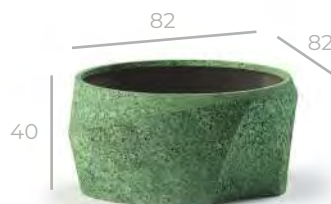


ethos

character of beliefs or ideals



S



M



L

“Living in an **accustomed place**, not only by herself.”

The word’s use in rhetoric is closely based on the Greek terminology used by Aristotle in his concept of the three artistic proofs or modes of persuasion.

In rhetoric, ethos (credibility of the speaker) is one of the three artistic proofs.

ἔθος

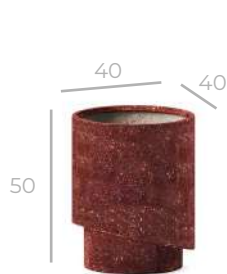
| code | dimensions (in cm) | liter | weight |
|------------|----------------------|-------|--------|
| S ES4242S | L 42 x W 42 x H 42 | 40 L | 12 kg |
| M ES8240M | L 82 x W 82 x H 40 | 167 L | 30 kg |
| L ES13140L | L 131 x W 131 x H 40 | 457 L | 60 kg |



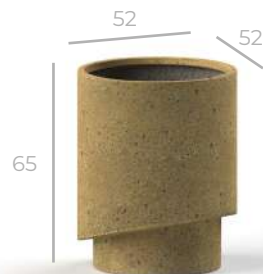


damu

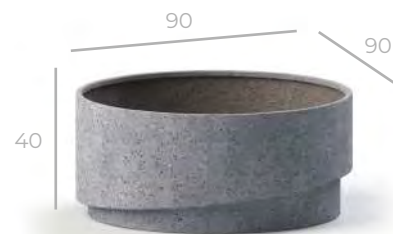
the dying god



S



M



L

“Dying god came to **awaken the plants.**”

He was a Mesopotamian god. While originally regarded as a dying god connected to vegetation, similar to Dumuzi or Ningishzida, with time he acquired the traits of a god of healing. In contrast with Dumuzi, who was described as a shepherd and was associated with herding animals, Damu was most likely connected with trees.



| code | dimensions (in cm) | liter | weight |
|-----------|--------------------|-------|--------|
| S DM4050S | L 40 x W 40 x H 50 | 52 L | 12 kg |
| M DM5265M | L 52 x W 52 x H 65 | 115 L | 32 kg |
| L DM9040L | L 90 x W 90 x H 40 | 222 L | 38 kg |





peri

winged spirits for beauty

double-sided pot



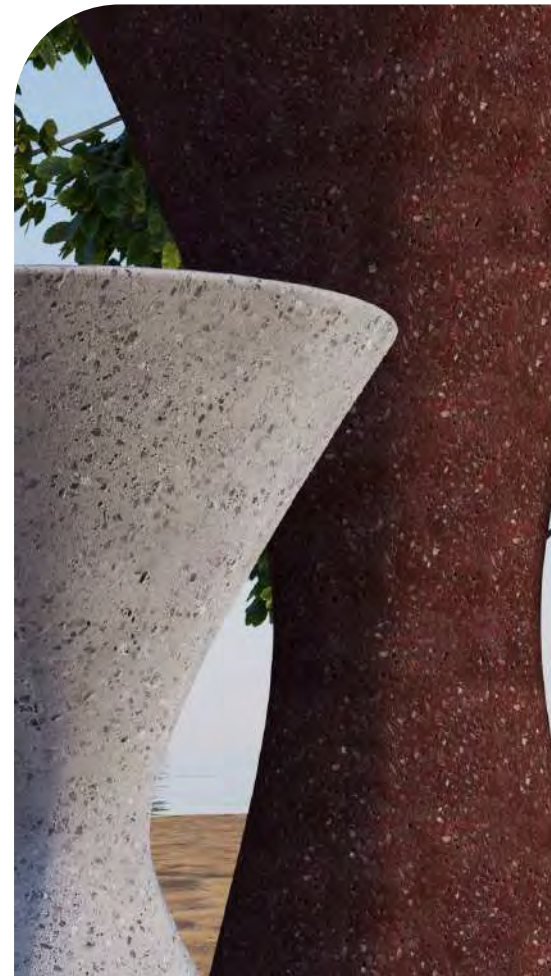
“Flying all over **forests and beaches**, that’s them.”

In Persian mythology, Pari are exquisite, winged spirits renowned for their beauty.

Peris were later adopted by other cultures. They are described as mischievous beings that have been denied entry to paradise until they have completed penance for atonement.

پری

| code | dimensions (in cm) | liter | weight |
|--------------------|--------------------|--------|--------|
| S PR3550S | L 35 x W 35 x H 50 | 11.3 L | 7 kg |
| M PR3550M | L 35 x W 35 x H 50 | 13 L | 5 kg |
| L PR4260L | L 42 x W 42 x H 60 | 22.7 L | 12 kg |
| XL PR5081XL | L 50 x W 50 x H 81 | 43.6 L | 24 kg |





ziva

sweep them off their feet



XL



XXL

“Living, being, existing.”

In Slavic mythology, the implementation of life is an epic character. Also the namer of this pot.

She is explained as “may she be alive and live long”, or a characterizing name, e.g., “she who is alive”.

ЗИВА

| code | dimensions (in cm) | liter | weight |
|----------------------|--------------------|-------|--------|
| XL ZV4055XL | L 40 x W 40 x H 55 | 35 L | 7 kg |
| XXL ZV6080XXL | L 60 x W 60 x H 80 | 121 L | 27 kg |



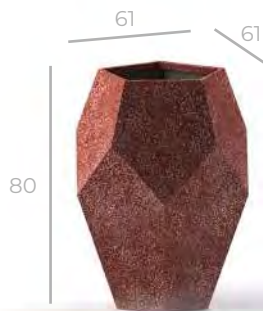


thor

hammer-wielding god



L



XL



XXL

“With his hammer, he is as **powerful** as a stone.”

Thor is a prominent god in Germanic paganism. In Norse mythology, he is a hammer-wielding god associated with lightning, thunder, storms, sacred groves and trees, strength, the protection of mankind, hallowing, and fertility.

Pórr

| code | dimensions (in cm) | liter | weight |
|----------------|---------------------|-------|--------|
| L TR4559L | L 45 x W 45 x H 59 | 49 L | 14 kg |
| XL TR6180XL | L 61 x W 61 x H 80 | 121 L | 36 kg |
| XXL TR61100XXL | L 61 x W 61 x H 100 | 141 L | 40 kg |

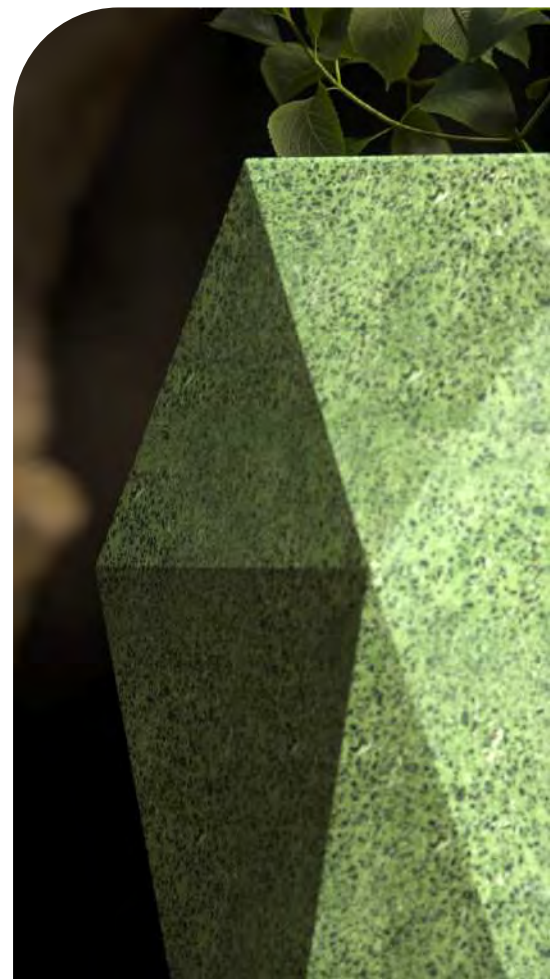


golem
the ultimate protector



“The **protector** of everything came to the forest.”

A golem is an animated anthropomorphic being in Jewish folklore which is entirely created from inanimate matter (usually clay or mud). In the Psalms and medieval writings, the word golem was used as a term for an amorphous, unformed material.



סלוג

| code | dimensions (in cm) | liter | weight |
|----------------------|--------------------|--------|--------|
| S GL384348S | L 38 x W 43 x H 48 | 46.6 L | 14 kg |
| M GL434348M | L 43 x W 43 x H 48 | 50 L | 14 kg |
| L GL545740L | L 54 x W 57 x H 40 | 62.5 L | 16 kg |
| XL GL868635XL | L 86 x W 86 x H 35 | 145 L | 29 kg |



atlas
above on the skies



“Ruler of life, **above.**”

In Greek mythology, Atlas is a Titan condemned to hold up the heavens or sky for eternity after the Titanomachy.

Feel the life, not just go along with it. The pot has the name of a mythological character who holds up celestial heavens.

“Ατλας

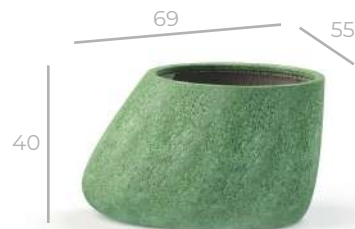
| code | dimensions (in cm) | liter | weight |
|-----------------------|---------------------|-------|--------|
| M ATL3754M | L 37 x W 37 x H 54 | 63 L | 20 kg |
| L ATL5572L | L 55 x W 55 x H 72 | 187 L | 26 kg |
| XL ATL45102XL | L 45 x W 45 x H 102 | 204 L | 44 kg |
| XXL ATL7852XXL | L 78 x W 78 x H 52 | 267 L | 49 kg |





hina

dominion female force



M



L

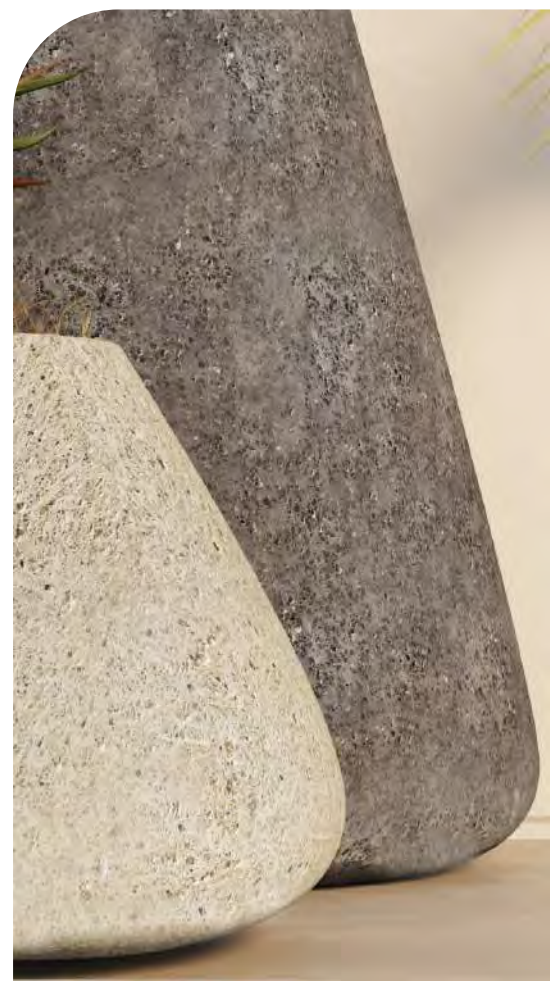
“**Shine bright** like a diamond on the side.”

Hina is the name assigned to a number of Polynesian deities. The name Hina usually relates to a powerful female force (typically a goddess or queen) who has dominion over a specific entity.

Her stories serve as traditions that unite Polynesia, specifically the Hawaiian Islands.

hina

| | code | dimensions (in cm) | liter | weight |
|----------|-----------|--------------------|--------|--------|
| M | HI695540M | L 69 x W 55 x H 40 | 85.7 L | 21 kg |
| L | HI695180L | L 69 x W 51 x H 80 | 155 L | 31 kg |





sia

deification of perception



“Intellectual energies just like the **heart of the darkness.**”

It was said that Atum created the two gods Sia and Hu from his blood spilled while cutting his own penis, a possible reference to circumcision.

Sia appeared standing on the solar barque during its journey through the night in New Kingdom.



| code | dimensions (in cm) | liter | weight |
|------------------------|----------------------|-------|--------|
| S SIA7545S | L 75 x W 75 x H 45 | 140 L | 22 kg |
| XL SIA10060XL | L 100 x W 100 x H 60 | 322 L | 56 kg |
| XXL SIA11480XXL | L 114 x W 114 x H 80 | 556 L | 100 kg |





ra

the sun as a creator



M



L



XL

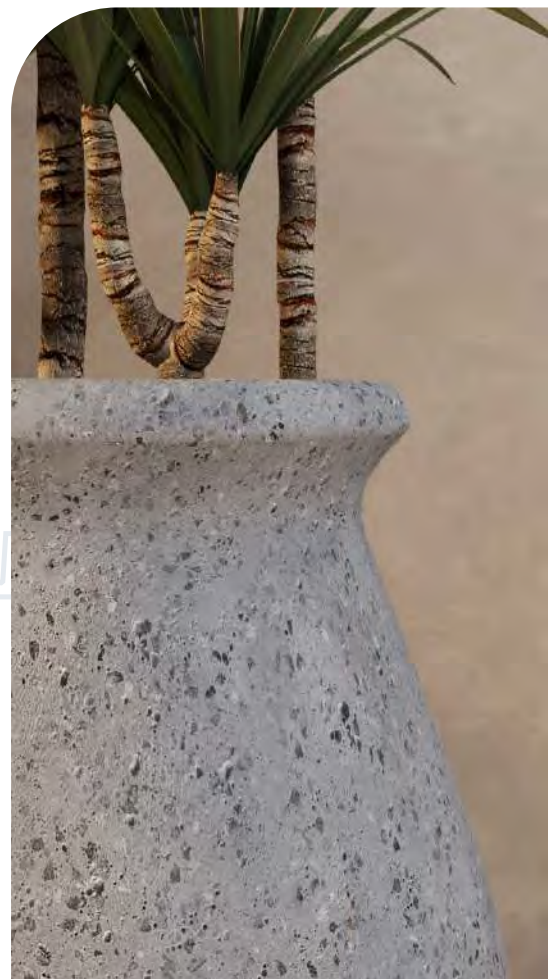
“Creator of all, **standing by himself.**”

Ra was the ancient Egyptian deity of the sun.

All forms of life were believed to have been created by Ra. In some accounts, humans were created from Ra’s tears and sweat, hence the Egyptians call themselves the “Cattle of Ra”.



| code | dimensions (in cm) | liter | weight |
|-------------|--------------------|-------|--------|
| M RA5745M | L 57 x W 57 x H 45 | 83 L | 16 kg |
| L RA5360L | L 53 x W 53 x H 60 | 87 L | 25 kg |
| XL RA7180XL | L 71 x W 71 x H 80 | 208 L | 56 kg |



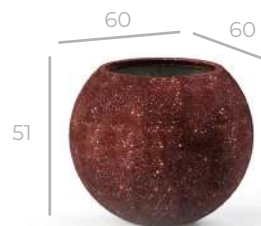


artemis

the last of the spheres



M



L



XL

“Two other children of Zeus: **hunters of the bright sun.**”

In Greek mythology, these were the children of Leto, the beautiful daughter of the original Titans Coeus and Phoebe.

Artemis is the goddess of the hunt, the wilderness, wild animals, nature, vegetation, childbirth, the Moon, and chastity.

”ΑΡΤΕΜΙΣ

| code | dimensions (in cm) | liter | weight |
|---------------------|--------------------|-------|--------|
| M ART3032M | L 40 x W 40 x H 32 | 26 L | 11 kg |
| L ART4051L | L 60 x W 60 x H 51 | 99 L | 23 kg |
| XL ART5068XL | L 80 x W 80 x H 68 | 244 L | 43 kg |

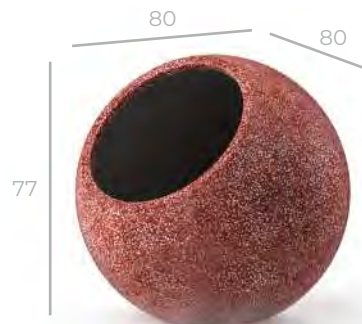


apollo

avertter of evil



L



XL

“No matter the background, trying to be good.”

Apollo is one of the Olympian deities in classical Greek and Roman religion and Greek and Roman mythology.

Apollo is an oracular god—the prophetic deity of the Delphic Oracle. Apollo is the god who affords help and wards off evil.

Ἀπόλλων

| code | dimensions (in cm) | liter | weight |
|-------------|--------------------|-------|--------|
| L AP3446L | L 48 x W 48 x H 46 | 50 L | 9 kg |
| XL AP5777XL | L 80 x W 80 x H 77 | 251 L | 42 kg |





apis

the renewal of the life



XL



XXL

“The two becomes one”

Apis controller of the river. Now on your doorstep. Apis was a primary deity in the pantheon of ancient Egypt.

Initially, he was assigned a significant role in her worship, being sacrificed and reborn. Later, Apis also served as an intermediary between humans and other powerful deities.



| code | dimensions (in cm) | liter | weight |
|----------------------|--------------------|-------|--------|
| XL AI4060XL | L 40 x W 40 x H 60 | 72 L | 34 kg |
| XXL AI6090XXL | L 60 x W 60 x H 90 | 262 L | 71 kg |



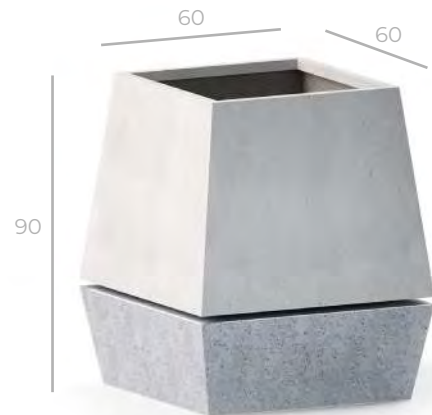


horus

on the throne, in the sky



XL



XXL

“Between **the time of the moon and the sun**, he possesses it.”

Horus is one of the most significant ancient Egyptian deities who served many functions, most notably god of kingship and the sky.

Since Horus was said to be the sky, he was considered to also contain the Sun and Moon.



| | code | dimensions (in cm) | liter | weight |
|------------|-----------|--------------------|-------|--------|
| XL | HO4060XL | L 40 x W 40 x H 60 | 92 L | 42 kg |
| XXL | HO6090XXL | L 60 x W 60 x H 90 | 342 L | 91 kg |





anubis

lord of the sacred land



XL



XXL

“He who is upon his sacred **mountain**”

Anubis is the god of death, mummification, embalming, the afterlife, cemeteries, tombs, and the Underworld, in ancient Egyptian religion, usually depicted as a canine or a man with a canine head.

Anubis was depicted in black, a color that symbolized regeneration, life, the soil of the Nile River.



| code | dimensions (in cm) | liter | weight |
|-----------------------|--------------------|-------|--------|
| XL AIS4060XL | L 50 x W 50 x H 60 | 152 L | 49 kg |
| XXL AIS6090XXL | L 75 x W 75 x H 90 | 489 L | 103 kg |





terra
the Earth itself



XXS



XS



S



M



L



XL



XXL

“Own the earth, choose your plants.”

Did you know that in Roman mythology, earth is referred to as “Terra”? Our pot has its name from the very grounds on the planet we set our feet in.

terra

| | code | dimensions (in cm) | liter | weight |
|------------|-------------|---------------------------|--------------|---------------|
| XXS | TE1916XXS | L 19 x W 19 x H 16 | 2 L | 2 kg |
| XS | TE2420XS | L 24 x W 24 x H 20 | 4 L | 3 kg |
| S | TE2825S | L 28 x W 28 x H 24 | 8 L | 4 kg |
| M | TE3832M | L 38 x W 38 x H 32 | 20 L | 6 kg |
| L | TE4639L | L 46 x W 46 x H 39 | 30 L | 8 kg |
| XL | TE5445XL | L 54 x W 54 x H 45 | 58 L | 26 kg |
| XXL | TE6857XXL | L 68 x W 68 x H 57 | 116 L | 52 kg |



vesta

twelve of the most honored gods



“On an **island somewhere**, before the volcanic eruption of Pompeii.”

Vesta is the virgin goddess of the hearth, home, and family in Roman mythology.

Impregnation by a phallus appearing in the flames of the hearth—the manifestation of the goddess. Then Vesta came to be.

vesta

| code | dimensions (in cm) | liter | weight |
|-----------------------|----------------------|--------|--------|
| M VS4030M | L 40 x W 40 x H 30 | 27.5 L | 6 kg |
| L VS6045L | L 60 x W 60 x H 45 | 93 L | 20 kg |
| XL VS8060XL | L 80 x W 80 x H 60 | 220 L | 52 kg |
| XXL VS12090XXL | L 120 x W 120 x H 90 | 781 L | 102 kg |





diana

as a goddess of the countryside



L



XL



XXL

“On the countryside, like **swimming**.”

Diana is a goddess in Roman mythology, primarily considered a patroness of the countryside, hunters, crossroads, and the Moon.

Diana is considered a virgin goddess and protector of childbirth.

diana

| code | dimensions (in cm) | liter | weight |
|----------------|----------------------|-------|--------|
| L DN6040L | L 60 x W 60 x H 40 | 79 L | 25 kg |
| XL DN9068XL | L 90 x W 90 x H 68 | 325 L | 60 kg |
| XXL DN12091XXL | L 120 x W 120 x H 91 | 809 L | 132 kg |





rhea

the mother of gods



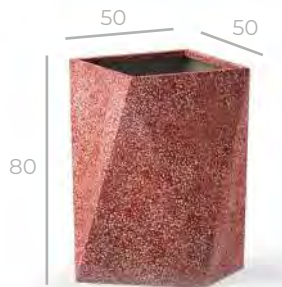
XS



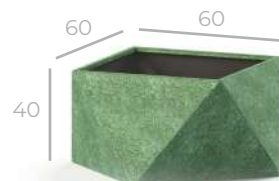
M



L



XL



XXL

“Feel the **mountain wilds** at your home.”

It is a pot, carrying the story of a known mythological character known in the history of Greek mythology. Just as powerful as the origin for the nature.

‘Ρεία



| code | dimensions (in cm) | liter | weight |
|----------------------|--------------------|--------|--------|
| XS RH2224XS | L 22 x W 22 x H 24 | 11.5 L | 4 kg |
| M RH3047M | L 30 x W 30 x H 47 | 46 L | 11 kg |
| L RH3565L | L 35 x W 35 x H 65 | 83 L | 22 kg |
| XL RH5080XL | L 50 x W 50 x H 80 | 202 L | 29 kg |
| XXL RH6040XXL | L 60 x W 60 x H 40 | 150 L | 30 kg |



indra
the king of heaven



“Protecting your pot, from rains and other **phenomenon.**”

From Indian mythology, the king of the highest heaven. Indra has its name from a guardian deity.

इन्द्र

| | code | dimensions (in cm) | liter | weight |
|------------|-----------|--------------------|---------|--------|
| XXS | IN1716XXS | L 17 x W 17 x H 16 | 2 L | 1 kg |
| XS | IN2120XS | L 21 x W 21 x H 20 | 4 L | 2 kg |
| S | IN2725S | L 27 x W 27 x H 25 | 10 L | 3 kg |
| M | IN3432M | L 34 x W 34 x H 32 | 22 L | 6 kg |
| L | IN4440L | L 44 x W 44 x H 40 | 59 L | 9 kg |
| XL | IN5348XL | L 53 x W 53 x H 48 | 78.5 L | 22 kg |
| XXL | IN6256XXL | L 62 x W 62 x H 56 | 125.5 L | 36 kg |



tapio
spirit of the forest



“Rule your little **forest**, with the pots we produce.”

The spirit of the forest in Finnish mythology, let it be. Tapio stays with you, helps you rule all your plants in the space you choose.

Without him, the forest should disappear and cease to exist.

tapio

| code | dimensions (in cm) | liter | weight |
|-----------------------|---------------------|-------|--------|
| M TA2540M | L 25 x W 25 x H 40 | 14 L | 6 kg |
| L TA3560L | L 35 x W 35 x H 60 | 49 L | 14 kg |
| XL TA4580XL | L 45 x W 45 x H 80 | 105 L | 29 kg |
| XXL TA50100XXL | L 50 x W 50 x H 100 | 152 L | 31 kg |





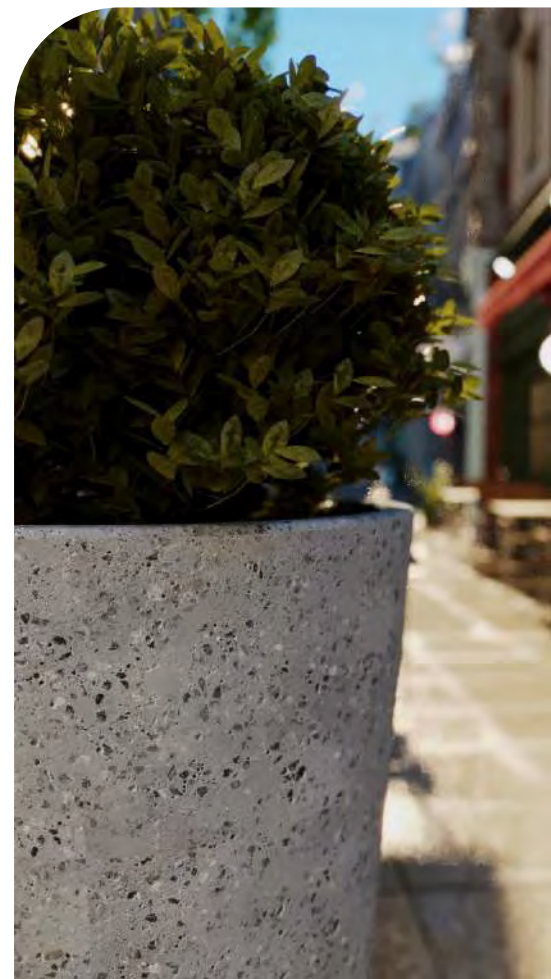
flora

cream on its purest



“Coming of **springtime**, the best time to show off your pots.”

Find the Roman mythological character Flora’s, the protector of the flowers, soul in this pot with four different sizes. Choose the one that fits you best.



flora

| code | dimensions (in cm) | liter | weight |
|---------------------|--------------------|-------|--------|
| M F4227M | L 42 x W 42 x H 27 | 25 L | 7 kg |
| L F4245L | L 42 x W 42 x H 45 | 40 L | 9 kg |
| XL F6060XL | L 60 x W 60 x H 60 | 132 L | 18 kg |
| XXL F4480XXL | L 44 x W 44 x H 80 | 80 L | 13 kg |



aure
pink as you float



L



XL



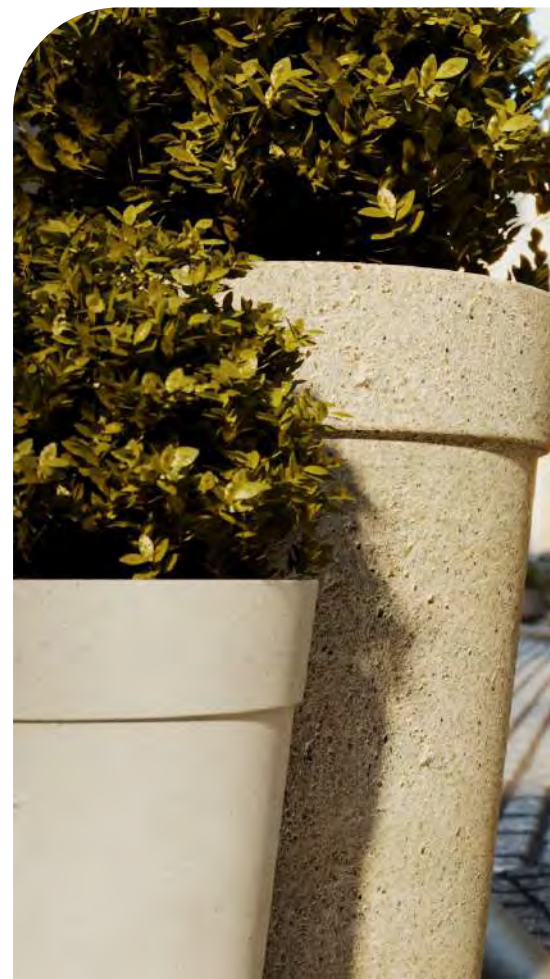
XXL

“Then the storms came, breezes formed.”

Nymphs of the breezes *Aurae*. The pot “Aure” originated its name from the character from Roman and Greek mythology.

Aúra

| code | dimensions (in cm) | liter | weight |
|---------------|--------------------|-------|--------|
| L AU3445L | L 32 x W 32 x H 45 | 20 L | 8 kg |
| XL AU4055XL | L 40 x W 40 x H 55 | 38 L | 11 kg |
| XXL AU5069XXL | L 50 x W 50 x H 69 | 75 L | 26 kg |





pan

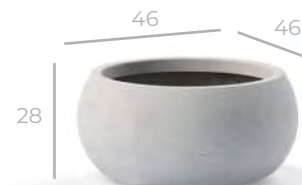
wild forces on the ground



M



L



XL

“Ask the gods, the parentage of one.”

When the parents are uncertain, the myth reflects the folk etymology that equates Pan’s name with the Greek word for “all”.

In ancient Greek religion and mythology, Pan is the god of the wild, shepherds and flocks, rustic music and impromptus, and companion of the nymphs.

Πάν

| code | dimensions (in cm) | liter | weight |
|------------|--------------------|-------|--------|
| M P2217M | L 22 x W 22 x H 17 | 7 L | 5 kg |
| L P3620L | L 36 x W 36 x H 20 | 18 L | 10 kg |
| XL P4628XL | L 46 x W 46 x H 28 | 40 L | 22 kg |





freya

yellow on the orient express



“With the lady of the magic, the future to be seen.”

In Norse resources; Freyja referred to as the ruler of love, beauty and fertility. But the magic of a special source is mentioned essentially.

Freyja

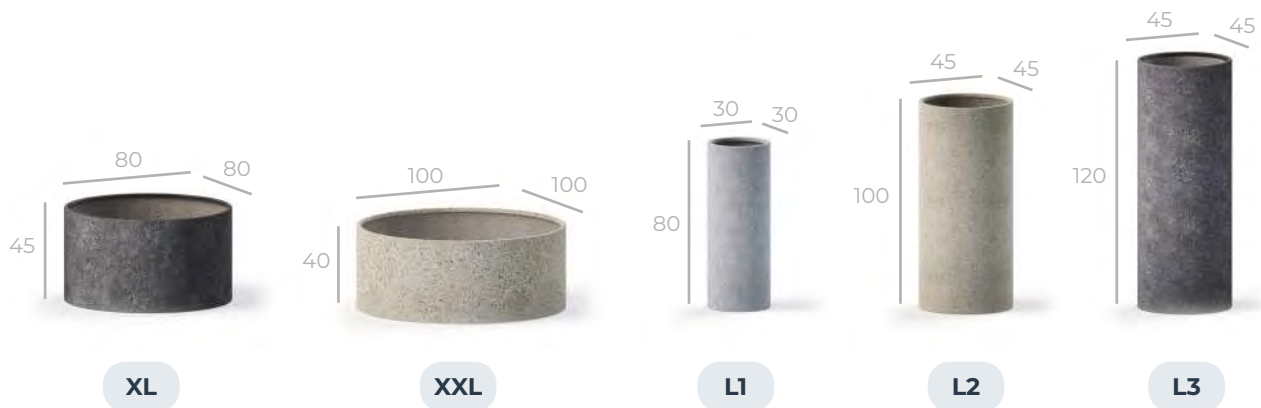
| code | dimensions (in cm) | liter | weight |
|-----------------------|----------------------|-------|--------|
| M FR7020M | L 70 x W 70 x H 20 | 37 L | 20 kg |
| L FR9527L | L 95 x W 95 x H 27 | 95 L | 37 kg |
| XL FR12034XL | L 120 x W 120 x H 34 | 207 L | 51 kg |
| XXL FR16045XXL | L 160 x W 160 x H 45 | 492 L | 115 kg |





cylinder

modern view of pink



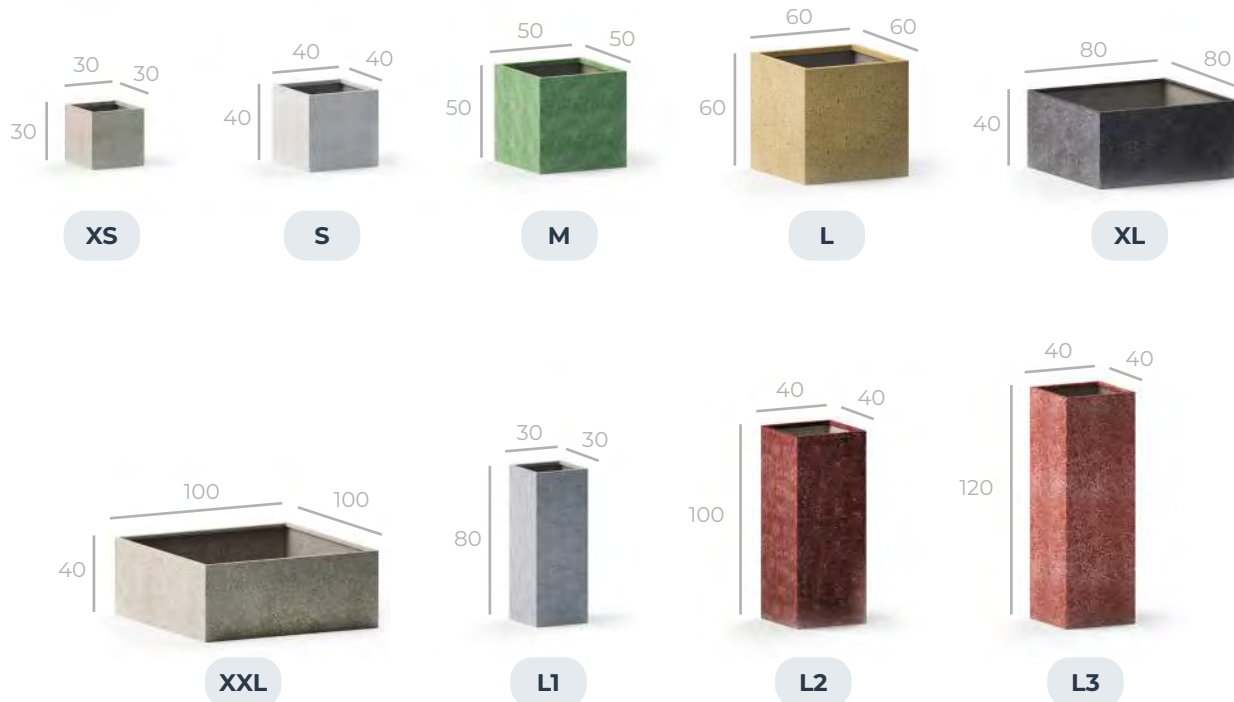
cylinder

| | code | dimensions (in cm) | liter | weight |
|--|-----------------------|----------------------|-------|--------|
| | XXS CY2015XXS | L 20 x W 20 x H 15 | 4 L | 2 kg |
| | XS CY2520XS | L 25 x W 25 x H 20 | 8 L | 4 kg |
| | S CY3525S | L 35 x W 35 x H 25 | 20 L | 7 kg |
| | M CY4535M | L 45 x W 45 x H 35 | 49 L | 11 kg |
| | L CY5545L | L 55 x W 55 x H 45 | 98 L | 17 kg |
| | XL CY8045XL | L 80 x W 80 x H 45 | 208 L | 34 kg |
| | XXL CY10040XXL | L 100 x W 100 x H 40 | 288 L | 44 kg |
| | L1 CY3080L1 | L 30 x W 30 x H 80 | 51 L | 16 kg |
| | L2 CY45100L2 | L 45 x W 45 x H 100 | 140 L | 32 kg |
| | L3 CY45120L3 | L 45 x W 45 x H 120 | 162 L | 60 kg |



cube

simplicity is out of control



cube

| code | dimensions (in cm) | liter | weight |
|-----------------------|----------------------|-------|--------|
| XS CU3030XS | L 30 x W 30 x H 30 | 23 L | 8 kg |
| S CU4040S | L 40 x W 40 x H 40 | 58 L | 13 kg |
| M CU5050M | L 50 x W 50 x H 50 | 115 L | 22 kg |
| L CU6060L | L 60 x W 60 x H 60 | 196 L | 35 kg |
| XL CU8040XL | L 80 x W 80 x H 40 | 234 L | 41 kg |
| XXL CU10040XXL | L 100 x W 100 x H 40 | 362 L | 56 kg |
| L1 CU3080L1 | L 30 x W 30 x H 80 | 65 L | 22 kg |
| L2 CU40100L2 | L 40 x W 40 x H 100 | 139 L | 68 kg |
| L3 CU40120L3 | L 40 x W 40 x H 120 | 168 L | 80 kg |



separator

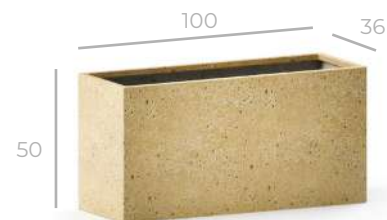
in front of everything, behind of nothing



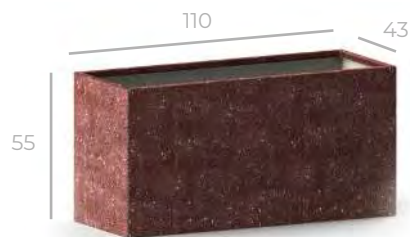
S



M



L



XL

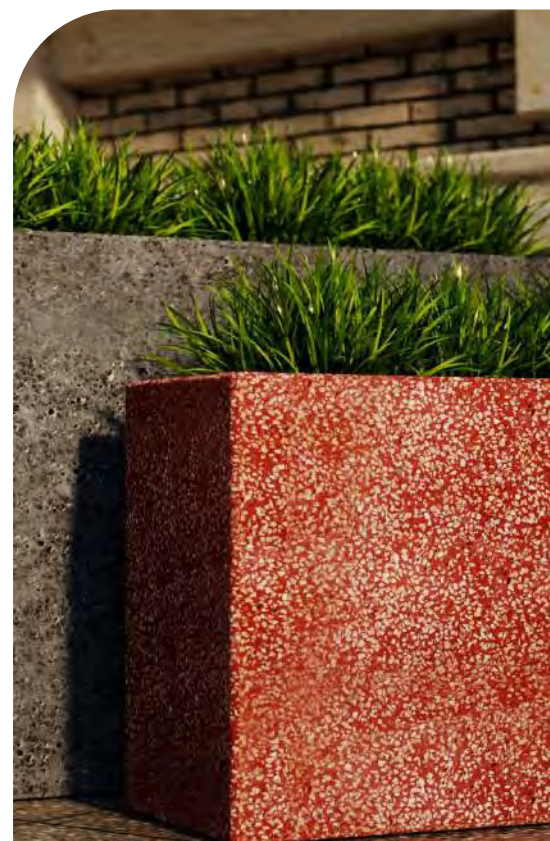


XXL

To divide any space you desire, but still keep the naturality at the same time. Seperator works best to serve you.

seperator

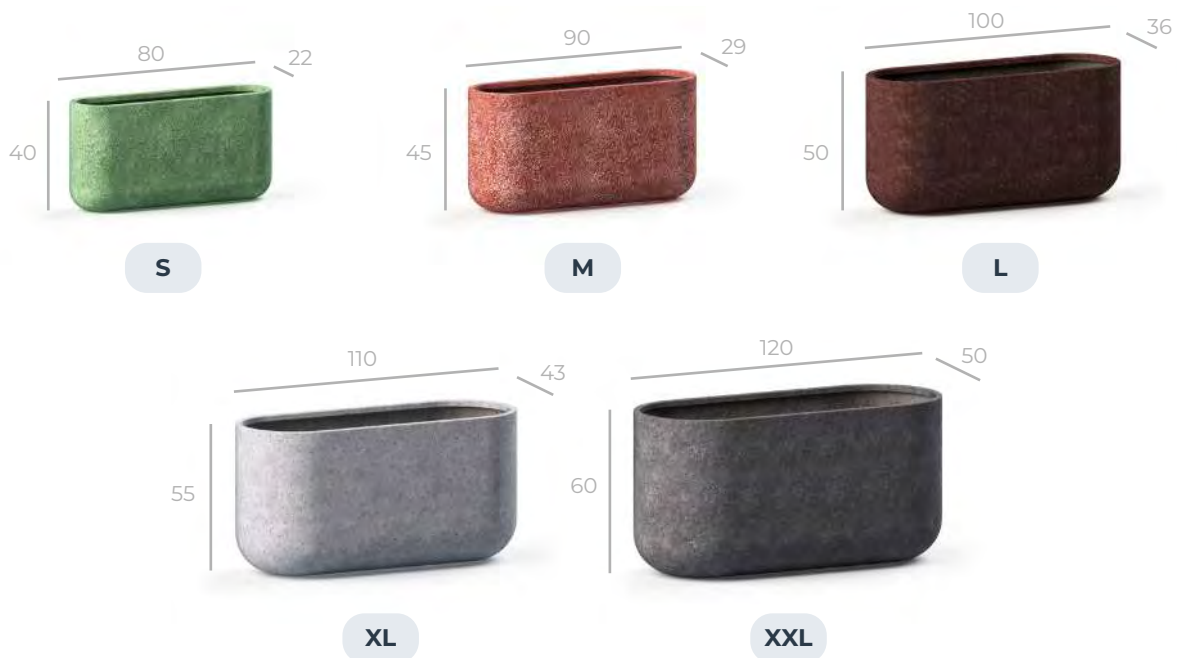
| code | dimensions (in cm) | liter | weight |
|-------------------------|---------------------|-------|--------|
| S SP802240S | L 80 x W 22 x H 40 | 84 L | 28 kg |
| M SP902945M | L 90 x W 29 x H 45 | 127 L | 35 kg |
| L SP1003650L | L 100 x W 36 x H 50 | 181 L | 43 kg |
| XL SP1104355XL | L 110 x W 43 x H 55 | 245 L | 53 kg |
| XXL SP1205060XXL | L 120 x W 50 x H 60 | 332 L | 63 kg |





odin

leader of the possessed



“When a noise, like that of carriages and horses, is heard by **sunset**, the people say: ‘Odin is passing by’”

Odin, from the Germanic mythology. He is the god of wisdom, and the father of all the gods in the Norse mythology.

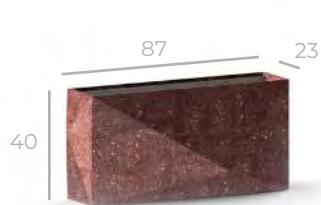
Óðinn

| code | dimensions (in cm) | liter | weight |
|------------------------|---------------------|--------|--------|
| S O802240S | L 80 x W 22 x H 40 | 55.8 L | 20 kg |
| M O902945M | L 90 x W 29 x H 45 | 93.8 L | 24 kg |
| L O1003650L | L 100 x W 36 x H 50 | 143 L | 32 kg |
| XL O1104355XL | L 110 x W 43 x H 55 | 207 L | 40 kg |
| XXL O1205060XXL | L 120 x W 50 x H 60 | 290 L | 48 kg |





loki
the shape shifter



S



M



L



XL

“Taking the **shape of the city**, where it is located.”

Loki is a shape shifter in Germanic mythology. Loki sometimes assists the gods and sometimes behaves maliciously towards them.

loki

| code | dimensions (in cm) | liter | weight |
|---------------------|---------------------|-------|--------|
| S LK872340S | L 87 x W 23 x H 40 | 62 L | 10 kg |
| M LK983245M | L 98 x W 32 x H 45 | 108 L | 16 kg |
| L LK1084050L | L 108 x W 40 x H 50 | 169 L | 28 kg |
| XL LK13060XL | L 130 x W 60 x H 60 | 369 L | 56 kg |





how to fill your pot?

To fill one of our pots, first, you need to fill the bottom of the pot with pumice stone.



Later, you must fill it with some soil, just so your plant can stay at top of the pot.

Finally, you can plant your seed or put your full grown plant in the soil.



tables



| | |
|----------|------------|
| frigg | 122 |
| onoris | 124 |
| rod | 126 |
| serapis | 128 |
| ether | 130 |
| tartarus | 132 |
| metis | 134 |
| erebus | 136 |
| lerina | 138 |
| hemera | 140 |
| gaia | 142 |
| uranus | 144 |
| khaos | 146 |
| pontus | 148 |
| kaira | 150 |
| moros | 152 |
| alaz | 154 |





frigg
wife of the Odin



6-8 people



XL

“Controlling the ultimate **marriage.**”

Frigg is a goddess in Germanic mythology. The source of most surviving information about her, she is associated with marriage, prophecy, and dwells in the wetland halls of Fensalir.

Frigg

code
XL FGC20075XL

dimensions (in cm)
L 200 x W 100 x H 75

weight
150 kg





onoris

patron of the ancient wars

2-3 people



M

“Patron of the ancient **wars.**”

Onoris, was a god of war who was worshipped in the Egyptian area of Abydos, and particularly in Thinis.



code
M ONS8075M

dimensions (in cm)
L 80 x W 80 x H 75

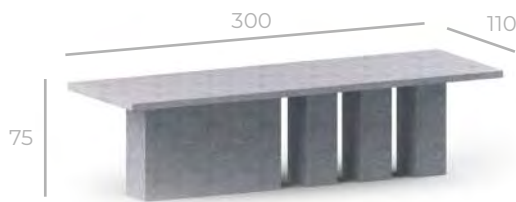
weight
62 kg





rod

family continuity representation



XL

10-12 people



XXL

14-16 people

“The reason for the **family continuity.**”

In the pre-Christian religion of Eastern and Southern Slavs, Rod is the god of the family, ancestors and fate, perhaps as the supreme god.

Род

code

XL RD30075XL

XXL RD40075XXL

dimensions (in cm)

L 300 x W 110 x H 75

L 400 x W 110 x H 75

weight

120 kg

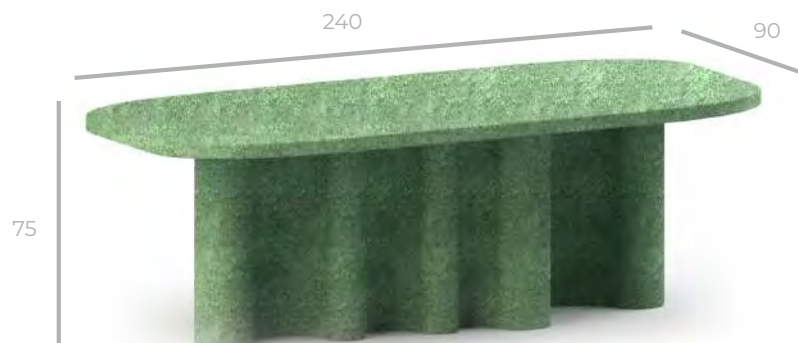
140 kg





serapis
unitive of dynasties

8-10 people



XL

“He unified all **dynasties.**”

Serapis is a Graeco-Egyptian deity. His cult was promoted during the third century BC in Egypt as a means to unify the Greeks and Egyptians in his realm.



code
XL SPS24090XL

dimensions (in cm)
L 240 x W 90 x H 75

weight
145 kg





ether

personification of the bright upper sky



M

2 people



L

4 people

“The day is **bright**, when looked.”

In Greek mythology, Ether is the personification of the bright upper sky. According to Hesiod, he was the son of Erebus (Darkness) and Nyx (Night), and the brother of Hemera (Day). In Orphic cosmogony Aether was the offspring of Chronus (Time), and the brother of Chaos and Erebus.

Αιθήρ

| code | dimensions (in cm) | weight |
|-----------|--------------------|--------|
| M ET7075M | L 70 x W 70 x H 75 | 30 kg |
| L ET9075L | L 90 x W 90 x H 75 | 40 kg |





tartarus

covering the ground

8-10 people



XL

“As far beneath, as heaven is **above earth.**”

Out of everything dying, keepers of those who spiritualize. In Greek history, Tartarus is mentioned to be the deity of underworld.

Τάρταρος

code
XL TS240100XL

dimensions (in cm)
L 240 x W 100 x H 75

weight
90 kg





metis
mythical wisdom

10-12 people



XXL

“Place for the **wisdom** and rest.”

Metis, in ancient Greek religion and mythology, was a mythical Oceanid nymph, one of the daughters of the Titans Oceanus and Tethys.

Lover of the big Zeus.

MῆΤΙΣ

code
XXL MS320105XXL

dimensions (in cm)
L 320 x W 105 x H 75

weight
110 kg





erebus

bright sun comes down



S

2 people



M

4 people



L

6 people

“Place of **darkness** between earth and underworld.”

This table represents deep darkness in Greek mythology, shadow or covered deity Erebus.

“Ερεβος

code

S EB8075S

M EB10075M

L EB12075L

dimensions (in cm)

L 80 x W 80 x H 75

L 100 x W 100 x H 75

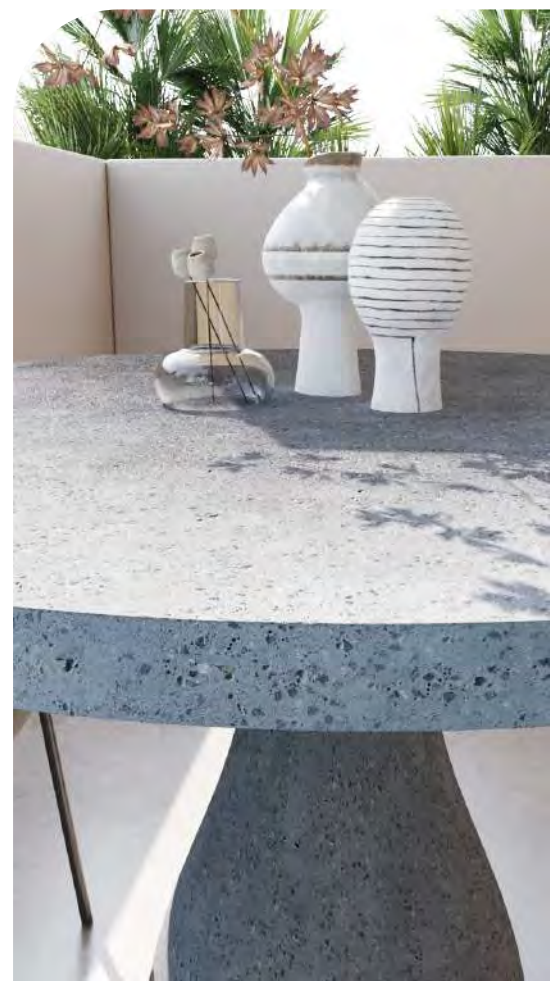
L 120 x W 120 x H 75

weight

35 kg

44 kg

62 kg





lerina

unknown hero

8-10 people



XL

“Just as the **heroes** emerges.”

Lero is an obscure Celtic god, invoked alongside the goddess Lerina as the eponymous spirit of Lérins in Provence. Nothing is known about these gods apart from these epigraphic dedications.

Lerina

code

XL LR240105XL

dimensions (in cm)

L 240 x W 105 x H 75

weight

65 kg





hemera

emerging day



M

8 people



L

10 people

“Day is getting closer **by the window.**”

In Greek mythology, Hemera was the personification of day. According to Hesiod, she was the daughter of Erebus (Darkness) and Nyx (Night), and the sister of Aether. Though separate entities in Hesiod’s Theogony, Hemera and Eos (Dawn) were often identified.

‘**Ημέρα**

| code | dimensions (in cm) | weight |
|-----------------|----------------------|--------|
| M HR160M | L 160 x W 160 x H 75 | 48 kg |
| L HR180L | L 180 x W 180 x H 75 | 64 kg |





gaia

house welcomes the earth



L

8-10 people



XXL

10-12 people

“In more ancient days they say that there was an **oracle**.”

Imagine a table visualised by that implementation of Earth in Greek mythology.

Γαΐα

| code | dimensions (in cm) | weight |
|----------------------|----------------------|--------|
| L GA24090L | L 240 x W 90 x H 75 | 70 kg |
| XL GA300105XL | L 300 x W 105 x H 75 | 92 kg |





uranus

deepest of the sky



L

8-10 people



XL

10-12 people

“Seeking the adventures **watching the skies.**”

In Greek mythology, Uranus is the personification of the sky and one of the Greek primordial deities.

Οὐρανός

| code | dimensions (in cm) | weight |
|--------------|----------------------|--------|
| L U240105L | L 240 x W 105 x H 75 | 150 kg |
| XL U300105XL | L 300 x W 105 x H 75 | 184 kg |

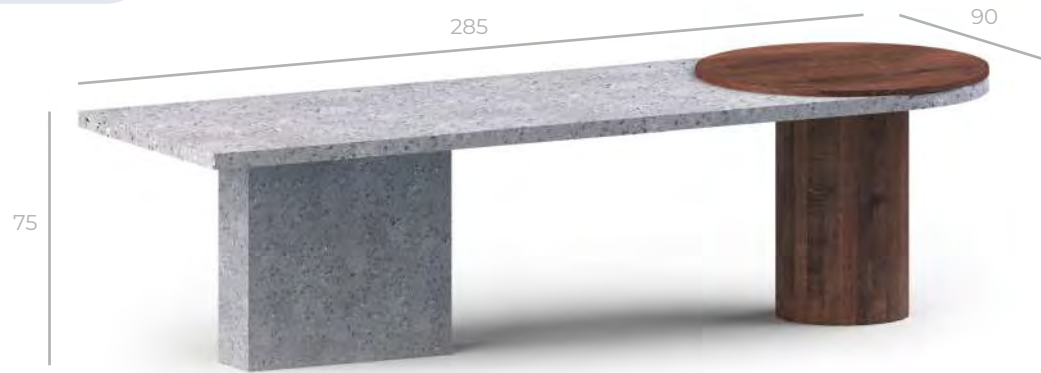




khaos

holder of everything alive

10-12 people



XL

“Nothing but the places to **sit in a void.**”

Chaos is the mythological void state preceding the creation of the universe (the cosmos) in Greek creation myths.

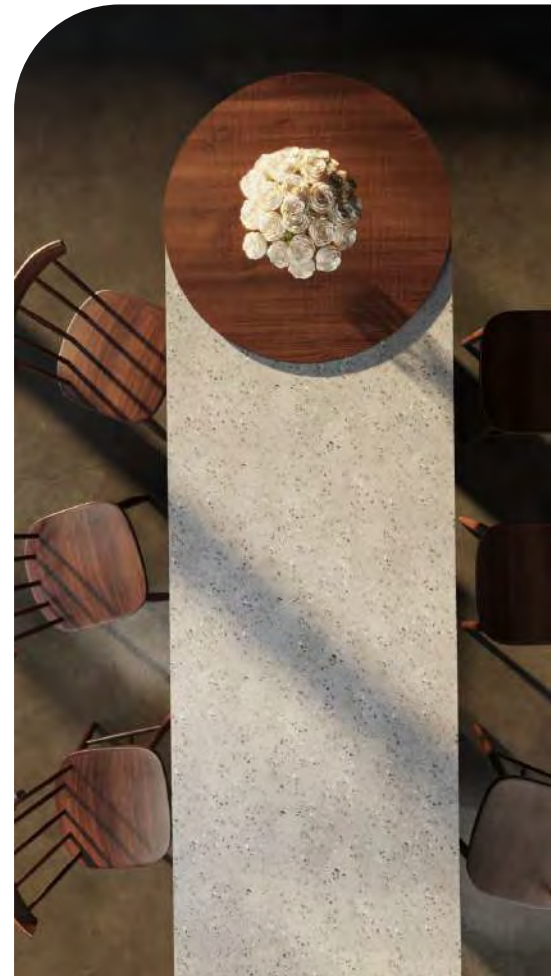
It is always said that at first Chaos came to be, or was. Eevrything came out of Chaos for what it's worth.

χάος

code
XL KO28590XL

dimensions (in cm)
L 285 x W 90 x H 75

weight
48 kg





pontus

king of the mermaids

6-8 people



L

“Next to a sea **full of mermaids**, listening to the singing inside.”

In Greek mythology, Pontus was an ancient, pre-Olympian sea-god, one of the Greek primordial deities. Pontus was Gaia’s son and has no father; according to the Greek poet Hesiod, he was born without coupling, though according to Hyginus, Pontus is the son of Aether and Gaia.

Πόντος

code

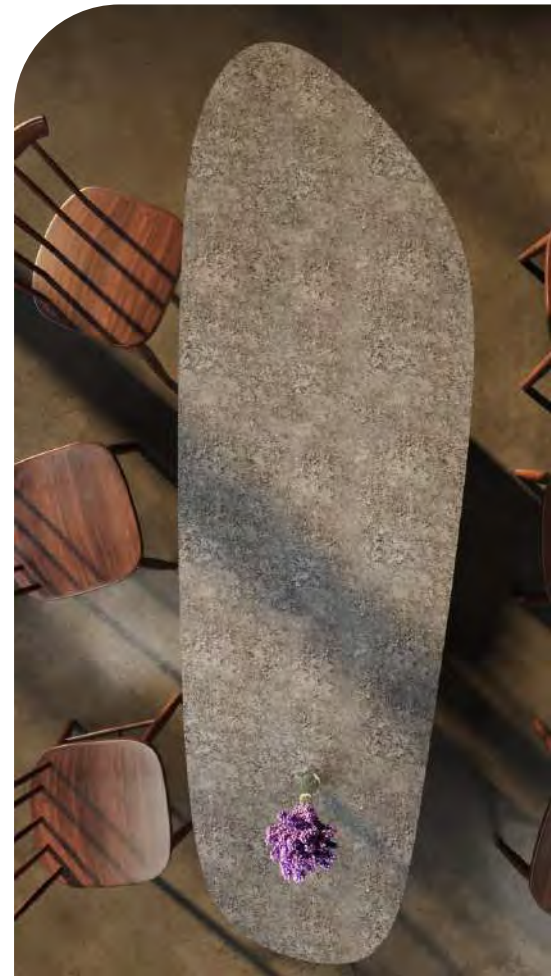
L PO24077L

dimensions (in cm)

L 240 x W 77 x H 75

weight

40 kg

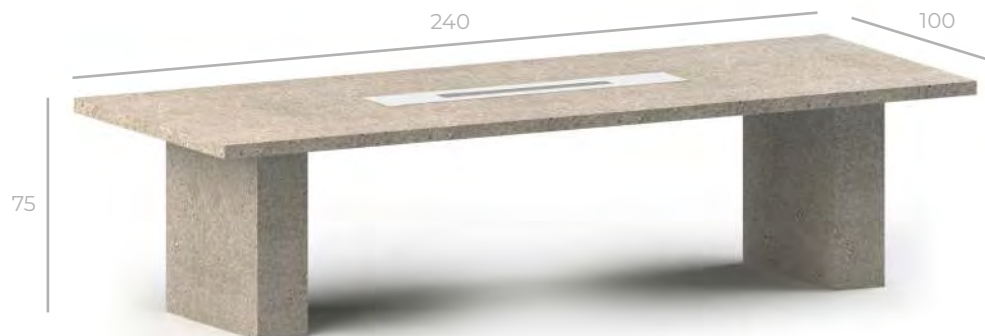




kaira

the primordial god

8-10 people



XL

“**Creator** awaits for the table to be ready.”

Kaira is creator god in Turkic mythology. He is the god who planted the tree of life called Ulukayın. He is the supreme god of the Tatars and the Son of the sky deity (Gök Tengri).

code
XL KA240100XL

dimensions (in cm)
L 240 x W 100 x H 75

weight
152 kg

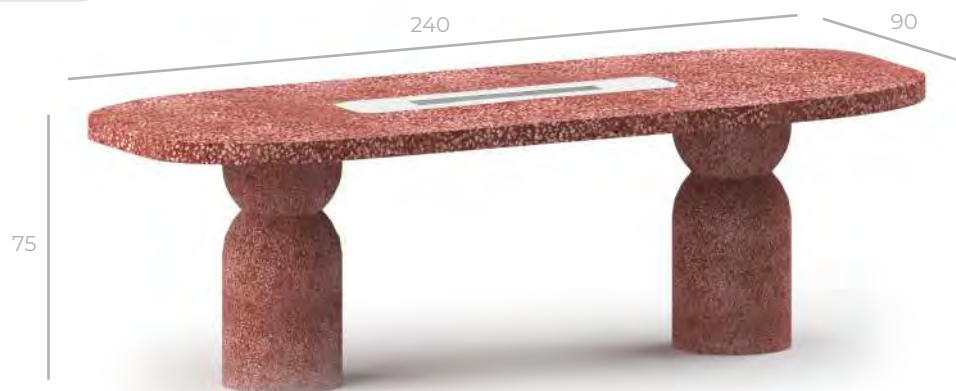




moros

chooser of fate

8-10 people



L

“**Fate** brought them together, before Moros.”

In Greek mythology, Moros is the ‘hateful’ personified spirit of impending doom, who drives mortals to their deadly fate. It was also said that Moros gave people the ability to foresee their death.

Mópos

code

L MS24090L

dimensions (in cm)

L 240 x W 90 x H 75

weight

132 kg





alaz

bringer of fire to the realm

6 people



M

“Fires meet in the backyard.”

Alaz is the god of fire in Turkic mythology. Also known as Alas-Batyr or sometimes Alaz Khan. He is an important deity in folk beliefs and son of Kayra.

Alaz Khan is depicted as an old man with a torch in his hand. He lives in flames.

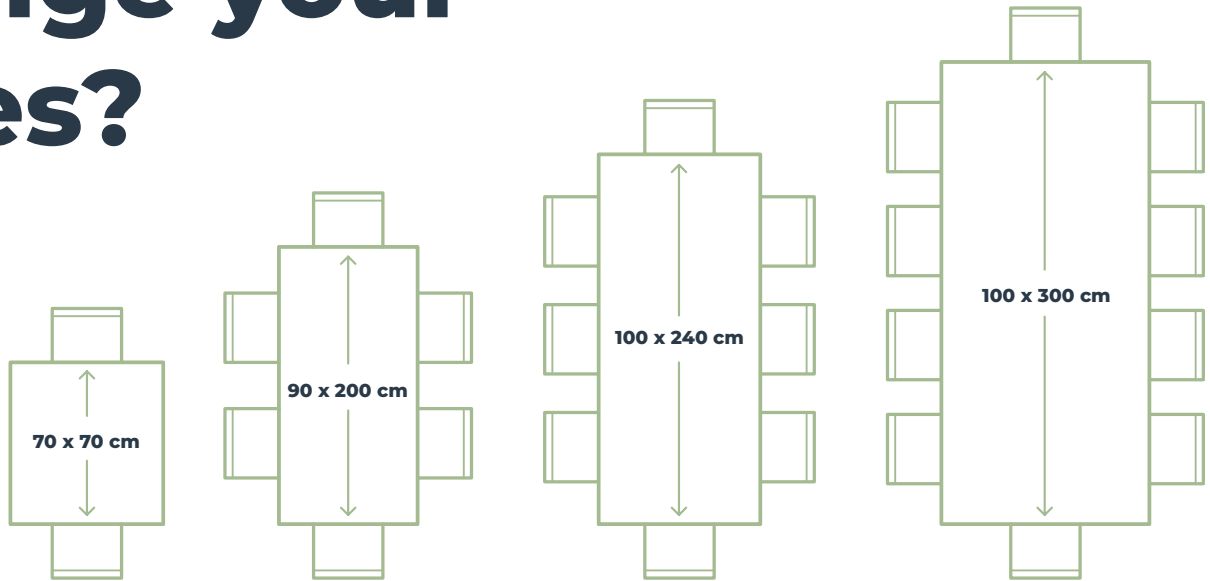
code
M AZ12075M

dimensions (in cm)
L 120 x W 120 x H 75

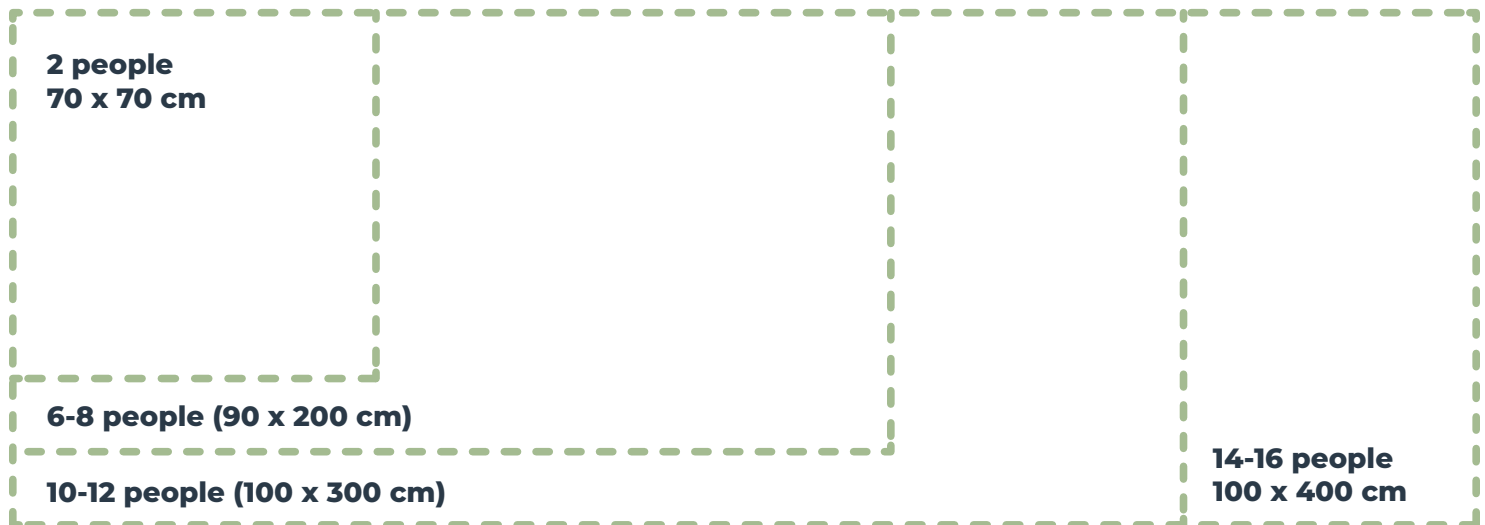
weight
56 kg



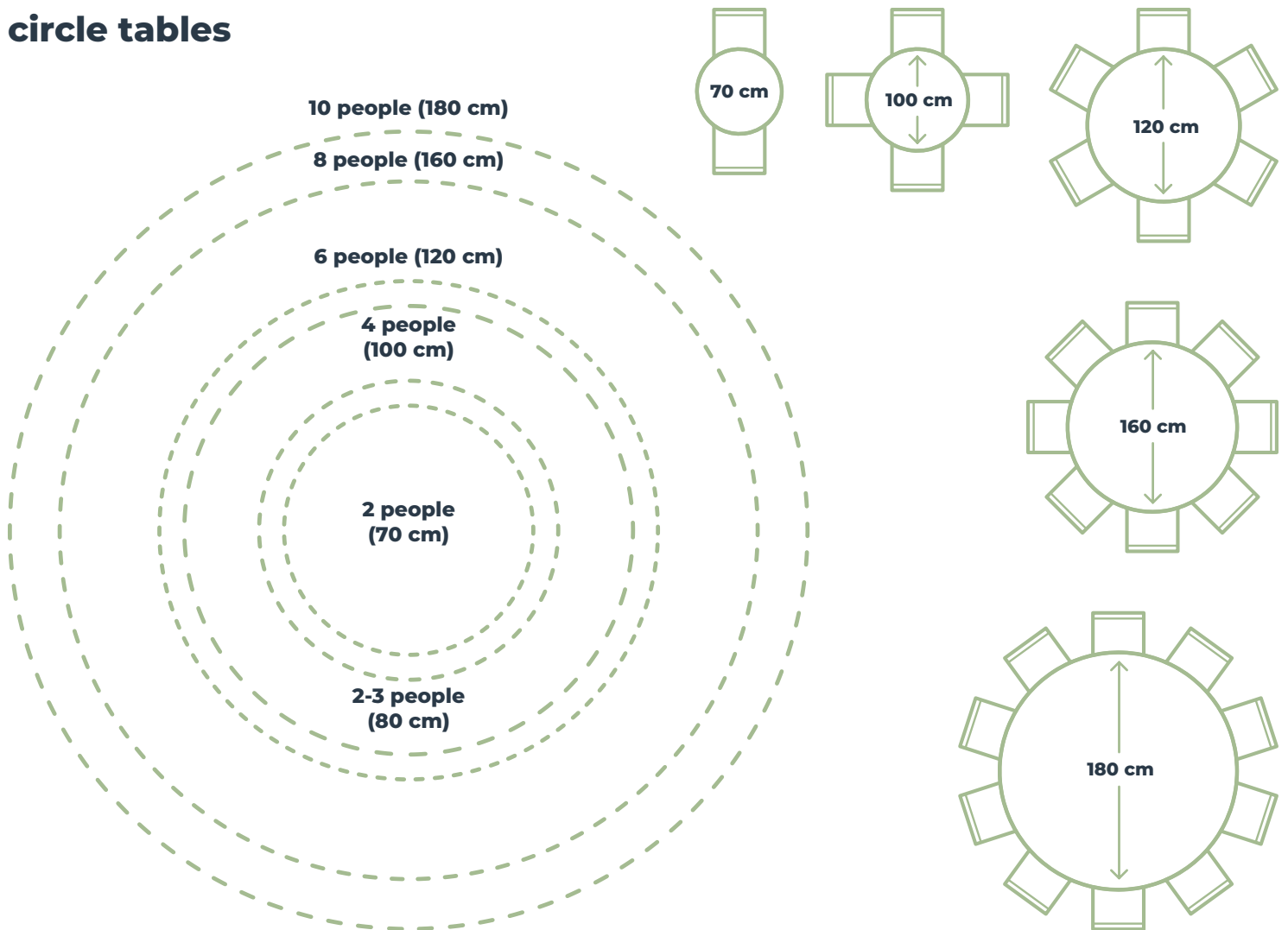
how do you arrange your tables?



rectangle tables



circle tables



You can relate to these diagrams when you arrange your dining tables. Also you can decide which sizes are the best option for your living room. These dimensions consists of the sizes that our table designs we have. Thus, this is a guide for you to select the best option from our products in the table category for you.

firepits





| | | | |
|-----------|------------|----------|------------|
| lir | 160 | | |
| asira | 162 | hapi | 182 |
| ness | 164 | osroes | 184 |
| rectangle | 166 | nut | 186 |
| cylinder | 168 | arao | 188 |
| sphere | 170 | anahita | 190 |
| min | 172 | ken | 192 |
| nun | 174 | silvanus | 194 |
| nemesis | 176 | camo | 196 |
| shed | 178 | kerotis | 198 |
| hesat | 180 | aybo | 200 |



lir

another curve on the sea

Burner Type: **OE**



M

“**See the curves**, just as arised from the sea.”

Lir is a sea god in Irish mythology. His name suggests that he is a personification of the sea, rather than a distinct deity.

Aoife grew jealous of the children Lir had and cursed them to live as swans for 900 years.

lir

code
M LIR12040M

dimensions (in cm)
L 120 x W 120 x H 40


weight
40 kg

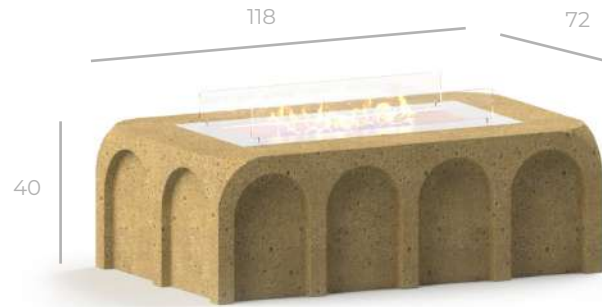




asira

lust and passion met

Burner Type:  C



M

“Just like the **curves in the body** of a woman.”

Asira was a god from Arabian mythology. He was known for his lust for Egyptian goddesses and ordinarily women.

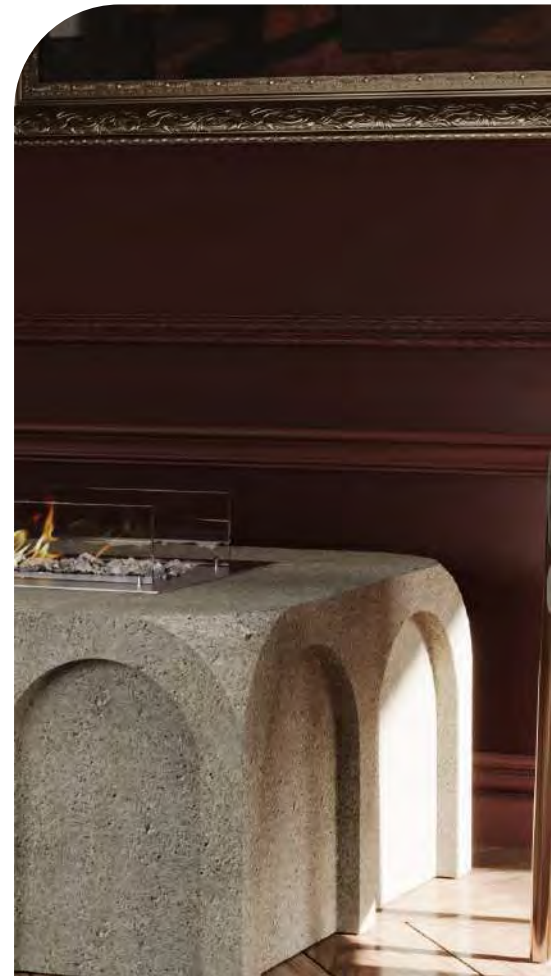
He is the deity of lust and passion. He often seen observing the body of a female human.

اریسا

code
M ASRT11840M

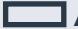
dimensions (in cm)
L 118 x W 72 x H 40

weight
52 kg





ness
to win, she lost

Burner Type:  A



M

“The tip of **the iceberg.**”

Ness is a princess of Irish mythology. She was brought up by twelve foster-fathers and was originally called Assa (“easy, gentle”), because she was such a pleasure to foster.

Later she was married to a king and rule an entire kingdom.

ness

code
M NSS12040M

dimensions (in cm)
L 120 x W 70 x H 40

weight
32 kg





rectangle

with bioethanol



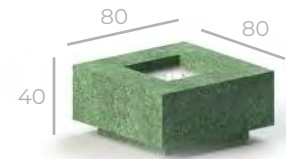
XS

Burner Type:  A



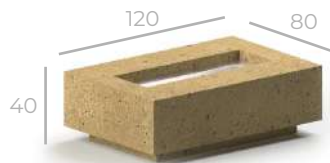
S

Burner Type:  A



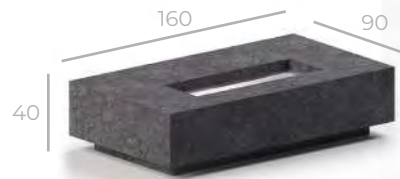
M

Burner Type:  A



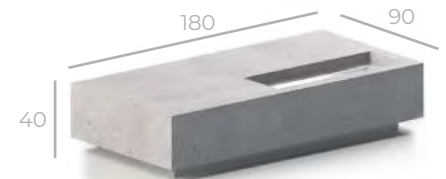
L

Burner Type:  C



XL

Burner Type:  C



XXL

Burner Type:  C



Rectangle is a simple series for fire pits.

You can see the bioethanol version of them listed here.

rectangle

| code | dimensions (in cm) | weight |
|-----------------------|---------------------|--------|
| XS RC45105XS | L 45 x W 45 x H 105 | 30 kg |
| S RC45130S | L 45 x W 45 x H 130 | 39 kg |
| M RC8040M | L 80 x W 80 x H 40 | 33 kg |
| L RC12040L | L 120 x W 80 x H 40 | 42 kg |
| XL RC16040XL | L 160 x W 90 x H 40 | 60 kg |
| XXL RC18040XXL | L 180 x W 90 x H 40 | 66 kg |



cylinder

with bioethanol



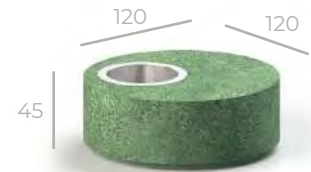
S

Burner Type: **OD**



M

Burner Type: **OD**



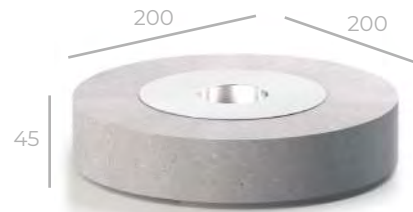
L

Burner Type: **OD**



XL

Burner Type: **OE**



XXL

Burner Type: **OE**

Cylinder is the simple series for fire pits.

You can see the bioethanol version of them listed here.

cylinder

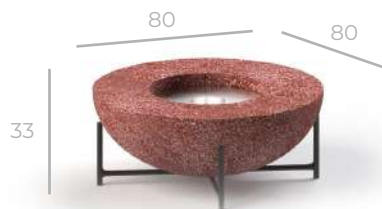
| code | dimensions (in cm) | weight |
|-----------------------|----------------------|--------|
| S CY55100S | L 55 x W 55 x H 100 | 36 kg |
| M CY55125M | L 55 x W 55 x H 125 | 42 kg |
| L CY12045L | L 120 x W 120 x H 45 | 36 kg |
| XL CY12045XL | L 120 x W 120 x H 45 | 36 kg |
| XXL CY20045XXL | L 200 x W 200 x H 45 | 200 kg |





sphere

on your terrace, calmly



M

Burner Type: **OD**



L

Burner Type: **OE**

Sphere is the fire pit series for your terraces, gardens or even balconies.

It has a leg-on size, and a bare size. You can choose any of them.

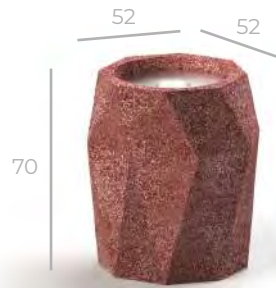
sphere

| code | dimensions (in cm) | weight |
|------------------|--------------------|--------|
| M SH8033M | L 80 x W 80 x H 33 | 18 kg |
| L SH9040L | L 90 x W 90 x H 40 | 25 kg |





min
god of virility



M

Burner Type: **OD**



L

Burner Type: **OD**

“The god shows his **wrah with fire.**”

Min is an ancient Egyptian god whose cult originated in the predynastic period. He was represented in many different forms, but was most often represented in male human form.



| code | dimensions (in cm) | weight |
|-------------------|--------------------|--------|
| M MIN5270M | L 52 x W 52 x H 70 | 21 kg |
| L MIN7235L | L 72 x W 72 x H 35 | 18 kg |



nun

holder of the primeval waters



M

Burner Type: **OD**

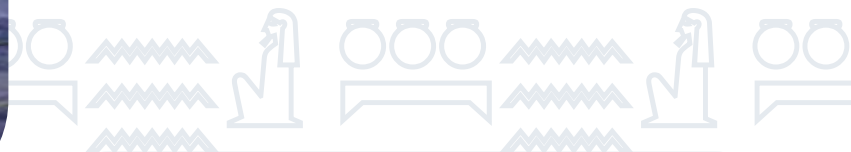


L

Burner Type: **OD**

“Even though being next to a **water, fires** never stop.”

Nun is the one of the eight deities of the Ogdoad representing ancient Egyptian primordial Chaos from which the Primeval Mound appeared. He is coupled with goddess Naunet and appears in anthropomorphic form but with the head of a frog.

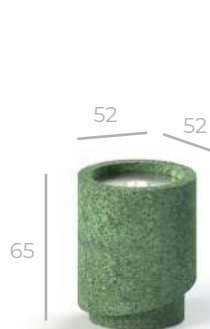


| code | dimensions (in cm) | weight |
|--------------------|---------------------|--------|
| M NUN6680M | L 66 x W 66 x H 80 | 20 kg |
| L NUN66120L | L 66 x W 66 x H 120 | 51 kg |





nemesis
retribution for everyone



S

Burner Type: **OD**



M

Burner Type: **OD**



L

Burner Type: **OD**

“**Sitting** for retribution.”

In ancient Greek religion, Nemesis is the goddess who enacts retribution against those who succumb to hubris, arrogance before the gods.

Her motto “is to give what is due”.

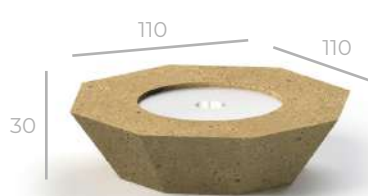
‘Ραμνουσία

| code | dimensions (in cm) | weight |
|-------------------|---------------------|--------|
| S NM5265S | L 52 x W 52 x H 65 | 18 kg |
| M NM52110M | L 52 x W 52 x H 110 | 22 kg |
| L NM9040L | L 90 x W 90 x H 40 | 27 kg |




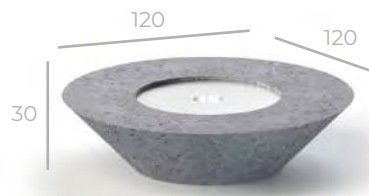


shed
the savior




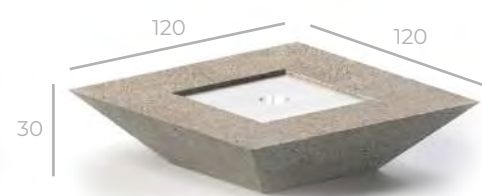
L1

Burner Type:  OE



L2

Burner Type:  OE



L3

Burner Type:  OC

“Savior awaits with his **white cloth.**”

Shed was a deity from ancient Egyptian religion. Popularly called “the Savior”, he is first recorded after the Amarna Period.

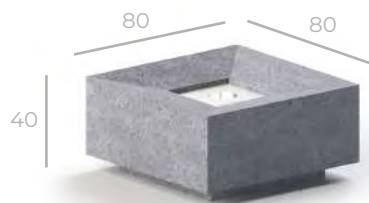
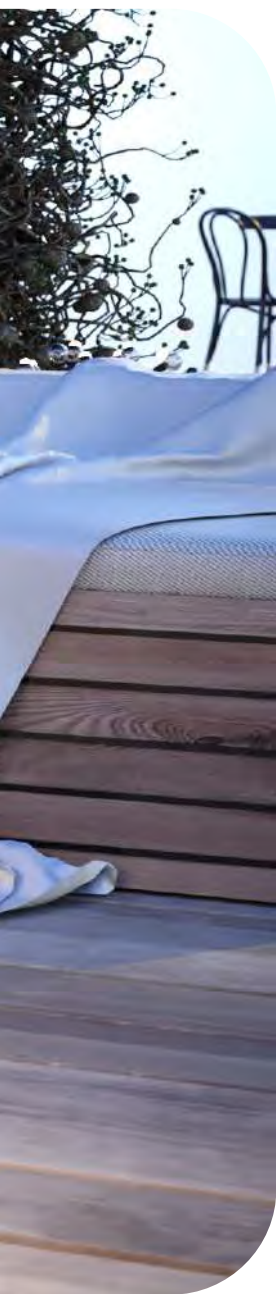
Representing the concept of salvation, Shed is identified with Horus, particularly Horus the Child.



| code | dimensions (in cm) | weight |
|---------------------|----------------------|--------|
| L1 SD11030L1 | L 110 x W 110 x H 30 | 30 kg |
| L2 SD12030L2 | L 120 x W 120 x H 30 | 33 kg |
| L3 SD12030L3 | L 120 x W 120 x H 30 | 48 kg |

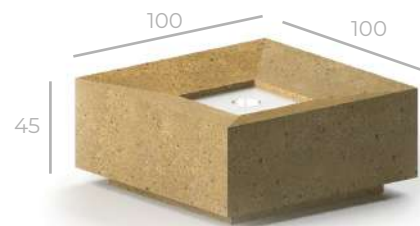


hesat
someone with milk



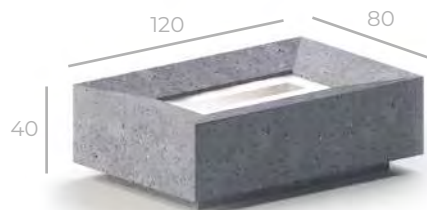
M

Burner Type:  **A**



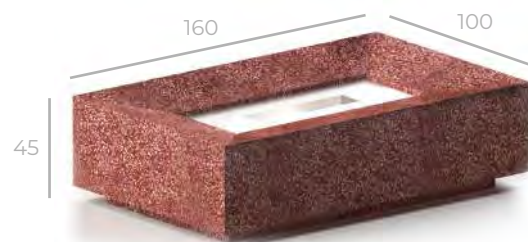
L

Burner Type:  **B**



XL

Burner Type:  **C**

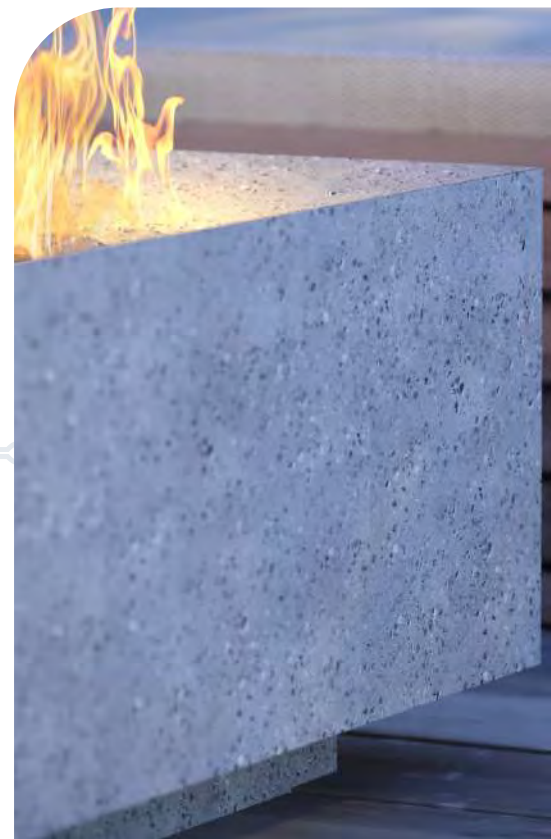


XXL

Burner Type:  **D**

“Milk as white.”

Hesat is an ancient Egyptian goddess in the form of a cow. She was said to provide humanity with milk.



code

M HT8040M

L HT10045L

XL HT12040XL

XXL HT16045XXL

dimensions (in cm)

L 80 x W 80 x H 40

L 100 x W 100 x H 45

L 120 x W 80 x H 40

L 160 x W 100 x H 45

weight

30 kg

45 kg

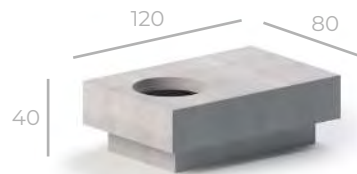
54 kg

60 kg



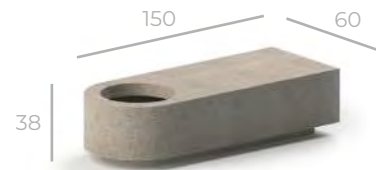
hapi

creator of the great Nile



M

Burner Type: **OE**



L

Burner Type: **OE**

“The **power** of the Great Nile.”

Hapi was the god of the annual flooding of the Nile in ancient Egyptian religion. The flood deposited rich silt (fertile soil) on the river’s banks, allowing the Egyptians to grow crops.



code

M HP12040M

L HP15038L

dimensions (in cm)

L 120 x W 80 x H 40

L 150 x W 60 x H 38

weight

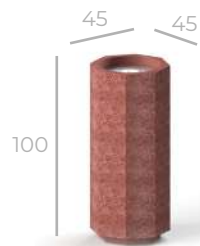
39 kg

36 kg



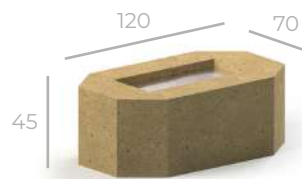
osroes

conqueror of the silver coins



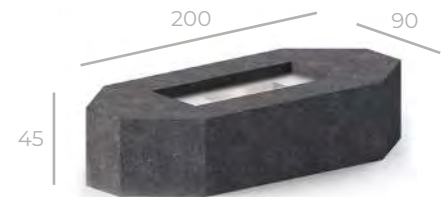
S

Burner Type:  D



L

Burner Type:  C



XL

Burner Type:  E

“So many **silver** around, but not too much.”

Osroes was a Parthian contender, who ruled the western portion of the Parthian Empire.

On the obverse of his silver coins, Osroes I is portrayed with his hair in bunches, whilst wearing a diadem.

osroes

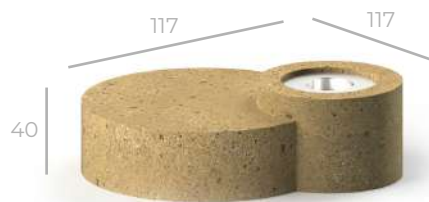
| code | dimensions (in cm) | weight |
|---------------------|---------------------|--------|
| S SS45100S | L 45 x W 45 x H 100 | 21 kg |
| L SS12045L | L 120 x W 70 x H 45 | 30 kg |
| XL SS20045XL | L 200 x W 90 x H 45 | 54 kg |





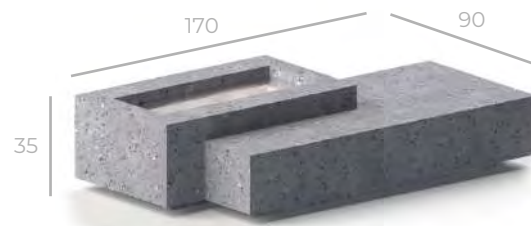
nut

in the middle of the night sky



M

Burner Type: **OB**



L

Burner Type: **OC**

“**Sky** is blue, stars are visible in the night.”

Nut is the goddess of the sky, stars, cosmos, mothers, astronomy, and the universe in the ancient Egyptian religion. She was seen as a star-covered nude woman arching over the Earth.



| code | dimensions (in cm) | weight |
|--------------------|----------------------|--------|
| M NUT11740M | L 117 x W 117 x H 40 | 36 kg |
| L NUT17035L | L 170 x W 90 x H 35 | 60 kg |





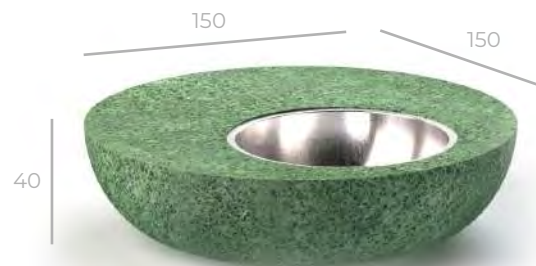
arao

war and the sun combined



M

Burner Type: **OC**



L

Burner Type: **OE**

“**Shine** brighter than the sun.”

Arao is the sun god in Tagalog mythology. The ancient Tagalogs worshiped the sun on account of its beauty.

When it rains with sunshine and the sky is somewhat red, they say that the anitos get together to give them war.

arao

| code | dimensions (in cm) | weight |
|-------------------|----------------------|--------|
| M AO10050M | L 100 x W 100 x H 50 | 36 kg |
| L AO15040L | L 150 x W 150 x H 40 | 60 kg |





anahita

cosmological figure of the waters



M

Burner Type: **OE**



L

Burner Type: **OE**

“Wet as **water.**”

Anahita is the goddess of the water in Persian mythology. Anahita is the cosmological figure venerated as the divinity of “the Waters” and hence associated with fertility, healing and wisdom. There is also a temple named Anahita in Iran.

anahita

| code | dimensions (in cm) | weight |
|-------------------|--------------------|--------|
| M ATA7046M | L 70 x W 70 x H 46 | 15 kg |
| L ATA8051L | L 80 x W 80 x H 51 | 18 kg |





ken

prisoner to Malivore



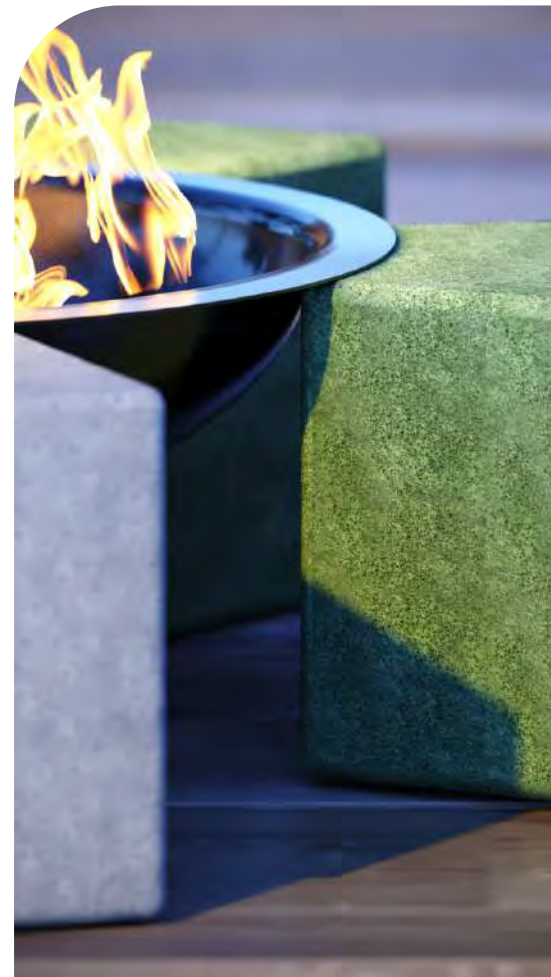
L

Burner Type: **OE**

“The **more**, the merrier.”

Ken is a malevolent god who has returned to take down Hope, the world’s only tribrid, and reclaim his title as the world’s most powerful being.

Prisoned in Malivore, but escaped.



ken

code

L KEN10025L

dimensions (in cm)

L 200 x W 200 x H 25

weight

68 kg



silvanus

tutelary god of woods



M

Burner Type: **OE**



L

Burner Type: **OE**

“From the **forest**, comes the fire.”

Silvanus was a Roman tutelary deity of woods and uncultivated lands. As protector of the forest, he especially presided over plantations and delighted in trees growing wild.

He is also described as a god watching over the fields.

silvanus

| code | dimensions (in cm) | weight |
|-------------------|----------------------|--------|
| M SN10737M | L 107 x W 90 x H 37 | 27 kg |
| L SN14937L | L 149 x W 126 x H 37 | 48 kg |





camo

creator of inertia

tabletop firepit



S

Burner Type: **OA**



M

Burner Type: **OA**



L

Burner Type: **OB**

“Sleeping beauty.”

Camo is the god of inertia in Greek mythology. He believes that the smooth moving of the universe and the lives should copy that as well.

Zeus created him, tearing the lazy side of his to the universe.

καμο

code

S CO3622S

M CO4620M

L CO6225L

dimensions (in cm)

L 36 x W 36 x H 22

L 46 x W 46 x H 20

L 62 x W 62 x H 25

weight

3 kg

5 kg

9 kg





kerotis

before everything, there it was

tabletop firepit



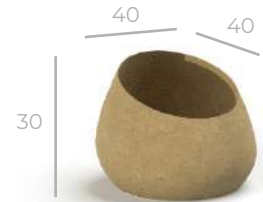
S

Burner Type: **OA**



M

Burner Type: **OA**



L

Burner Type: **OB**

“Always **rude.**”

Kerotis is the legendary creator god of everything in Egyptian mythology.

He is known for existing before everything, but nobody has ever seen him, even gods sometimes state him as a legend. But there are cases proving him to exist.

code

S KK2923S

M KK3322M

L KK4030L

dimensions (in cm)

L 29 x W 29 x H 23

L 33 x W 33 x H 22

L 40 x W 40 x H 30

weight

2 kg

3 kg

5 kg





aybo
joy for everyone

tabletop firepit



S

Burner Type: **OA**



M

Burner Type: **OB**

“Calling all the **monsters.**”

Aybo are creatures of joy in Indian mythology.

They are never alone, and always laughing at something or making fun of someone. They are known to be created the “joy” for human kind.

अयुबो

code

S AY4020S

M AY4420M

dimensions (in cm)

L 40 x W 40 x H 20

L 44 x W 40 x H 20

weight

1 kg

1 kg



bioethanol firepits



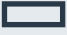







Bioethanol fire pits are used with this fuel.

This means you have to buy a bioethanol fuel to make your firepit work.






WARNING:

Under in any circumstances, do not put more bioethanol when your firepit is already burning.

Rectangle Series

| Type | Size Chart | Capacity | Heat Scope | Burn Time |
|--|------------------|----------|--------------------|-----------|
|  A | 45x16x10 (h) cm | 3,5 L | 30 m ² | 6 hours |
|  B | 60x16x10 (h) cm | 4,8 L | 40 m ² | 6 hours |
|  C | 80x16x10 (h) cm | 6,5 L | 50 m ² | 6 hours |
|  D | 100x16x10 (h) cm | 8 L | 65 m ² | 6 hours |
|  E | 120x16x10 (h) cm | 9,5 L | 80 m ² | 6 hours |
|  F | 140x16x10 (h) cm | 11 L | 95 m ² | 6 hours |
|  G | 160x16x10 (h) cm | 12,5 L | 110 m ² | 6 hours |
|  H | 200x16x10 (h) cm | 15 L | 140 m ² | 6 hours |

Round Series

| Type | Size Chart | Capacity | Heat Scope | Burn Time |
|--|----------------|----------|-------------------|-----------|
|  A | Ø:9 h:7 cm | 0,6 L | 15 m ² | 4 hours |
|  B | Ø:17,5 h:10 cm | 1,5 L | 20 m ² | 8 hours |
|  C | Ø:25 h:10 cm | 3,5 L | 25 m ² | 8 hours |
|  D | Ø:30 h:10 cm | 5 L | 35 m ² | 8 hours |
|  E | Ø:40 h:11 cm | 10 L | 60 m ² | 8 hours |

**coffee
tables**





| | | | |
|----------|------------|----------|------------|
| sedna | 206 | | |
| ruda | 208 | | |
| lotan | 210 | | |
| naya | 212 | nabu | 232 |
| tilla | 214 | attis | 234 |
| cardea | 216 | lada | 236 |
| luna | 218 | zartus | 238 |
| elyon | 220 | mors | 240 |
| tengri | 222 | medusa | 242 |
| rahu | 224 | zeus | 244 |
| kronus | 226 | miryo | 246 |
| poseidon | 228 | heracles | 248 |
| hades | 230 | nibru | 250 |



sedna

mistress of the sea



M

“For all the colors **that belong to the sea**, there is a stone.”

Sedna is the goddess of the sea and marine animals in Inuit mythology, also known as the Mother of the Sea or Mistress of the Sea. The story of Sedna, which is a creation myth, describes how she came to rule over Adivun, the Inuit underworld.



code
M SDN12040M

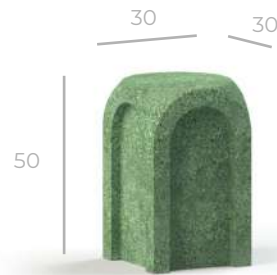
dimensions (in cm)
L 120 x W 70 x H 40

weight
32 kg

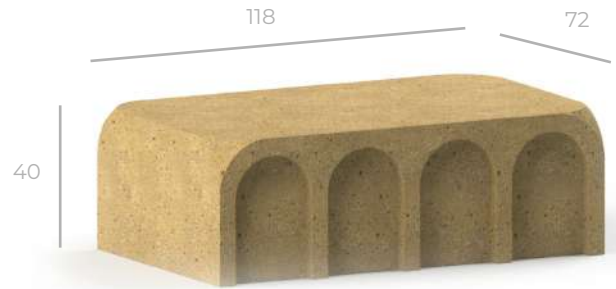


ruda

protector of the Earth



S



M

“Watching and protecting the Earth, **just like the Moon.**”

Ruda is a deity that was of paramount importance in the Arab pantheon of gods worshipped by the North Arabian tribes of pre-Islamic Arabia.

He served as a protective deity. Ruda was a moon deity.

ادور

| code | dimensions (in cm) | weight |
|--------------------|---------------------|--------|
| S ASR3050S | L 30 x W 30 x H 50 | 15 kg |
| M ASR11840M | L 118 x W 72 x H 40 | 52 kg |





lotan

servant and later god



S



M



L

“Observing from down, **ruling as a god from above.**”

Lotan is a servant of the sea god Yam in Ugaritic mythology.

The Litani River that winds through the Beqaa Valley in Lebanon is named after Lotan as the river was believed to be the personification of the god.



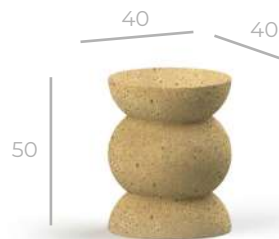
| code | dimensions (in cm) | weight |
|------------|--------------------|--------|
| S LTN5832S | L 58 x W 58 x H 32 | 11 kg |
| M LTN5840S | L 58 x W 58 x H 40 | 22 kg |
| L LTN5848S | L 58 x W 58 x H 48 | 36 kg |



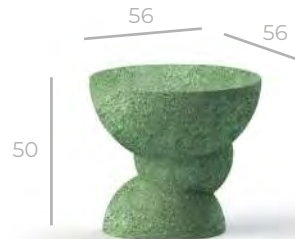


naya

let there be light inside



S



M

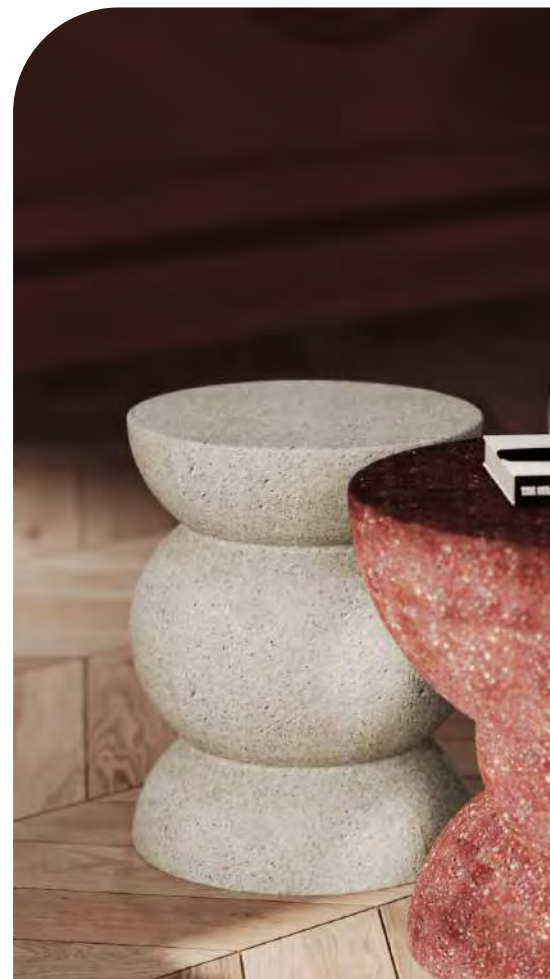
“The lights on the rocks, letting the room see everything.”

Naya is a deity known from Hurrian theophoric names.

She is the deity of the sunlight and the rocks. Usually she gets her strongness from the rocks she finds, and the beauty from the sunlight.



| code | dimensions (in cm) | weight |
|------------|--------------------|--------|
| S NYA4050S | L 40 x W 40 x H 50 | 30 kg |
| M NYA5650M | L 56 x W 56 x H 50 | 32 kg |





tilla
lover of golds



M

“For the love of the **gold**, he would do everything”

Tilla was a Hurrian god. Worship of Tilla is best attested in documents from Nuzi, where he was the most common deity in Hurrian theophoric names next to the weather god Teshub.



code
M TLL12640M

dimensions (in cm)
L 126 x W 66 x H 40

weight
30 kg





cardea

little god



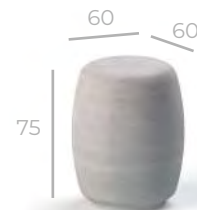
S



M



L



XL

“Doors are open for the **sun to go in** and brighten the tables.”

Cardea was the ancient Roman goddess of the hinge (Latin *cardo*, *cardinis*), Roman doors being hung on pivot hinges. The Augustan poet Ovid conflates her with another archaic goddess named Carna, whose festival was celebrated on the Kalends of June.

cardea

| code | dimensions (in cm) | weight |
|-------------------|----------------------|--------|
| S C5740S | L 57 x W 57 x H 40 | 15 kg |
| M C9740M | L 97 x W 97 x H 40 | 36 kg |
| L C12540L | L 125 x W 125 x H 40 | 60 kg |
| XL C6075XL | L 60 x W 60 x H 75 | 66 kg |





luna

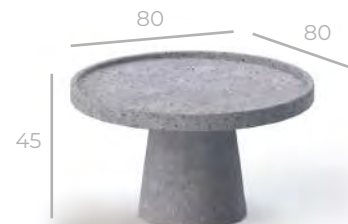
diva of the Roman



S



M



L

“Moon rises, though **not everywhere.**”

In ancient Roman religion and myth, Luna is the divine embodiment of the Moon. She is often presented as the female complement of the Sun, Sol, conceived of as a god.

Luna is one of the three divas in Roman mythology.

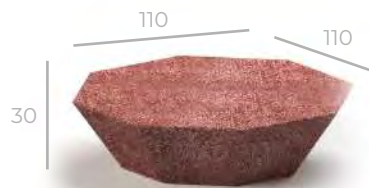
Luna

| code | dimensions (in cm) | weight |
|-----------|--------------------|--------|
| S LN4045S | L 40 x W 40 x H 45 | 11 kg |
| M LN6045M | L 60 x W 60 x H 45 | 22 kg |
| L LN8045L | L 80 x W 80 x H 45 | 36 kg |





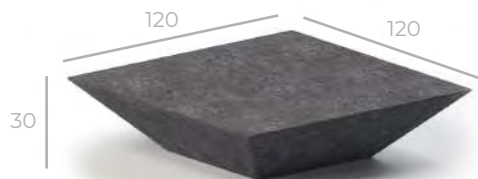
elyon
god the highest



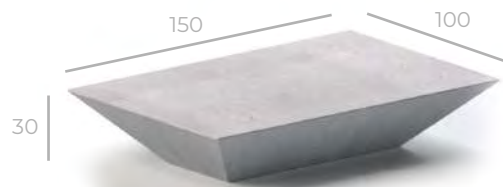
S



M



L



XL

“Holder of the light, peace bringer.”

Elyon is an epithet of the God of the Israelites in the Hebrew Bible. 'Ēl 'Elyōn is usually rendered in English as “God Most High”, and similarly in the Septuagint as god the highest.

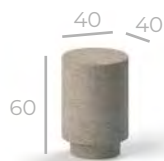
זוילע

| code | dimensions (in cm) | weight |
|---------------------|----------------------|--------|
| S EL11030S | L 110 x W 110 x H 30 | 15 kg |
| M EL12030M | L 120 x W 120 x H 30 | 16 kg |
| L EL12030L | L 120 x W 120 x H 30 | 25 kg |
| XL EL15030XL | L 150 x W 100 x H 30 | 28 kg |

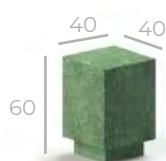




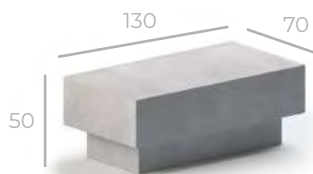
tengri
chief deity



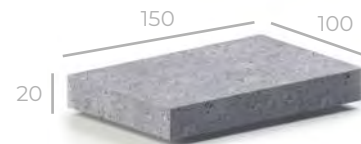
XXS



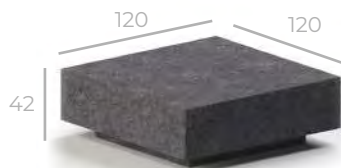
XS



S



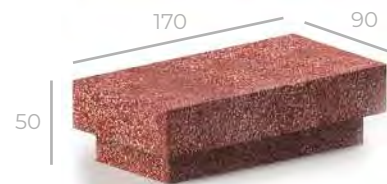
M



L



XL



XXL



“Primary ones **stand alone** in the room.”

Tengri is one of the names for the primary chief deity of the early Turkic and Mongolic peoples.

| code | dimensions (in cm) | weight |
|----------------|----------------------|--------|
| XXS TG4060XXS | L 40 x W 40 x H 60 | 9 kg |
| XS TG4060XS | L 40 x W 40 x H 60 | 11 kg |
| S TG13050S | L 130 x W 70 x H 50 | 24 kg |
| M TG15020M | L 150 x W 100 x H 20 | 28 kg |
| L TG12042L | L 120 x W 120 x H 42 | 34 kg |
| XL TG12042XL | L 120 x W 120 x H 42 | 29 kg |
| XXL TG17050XXL | L 170 x W 90 x H 50 | 39 kg |

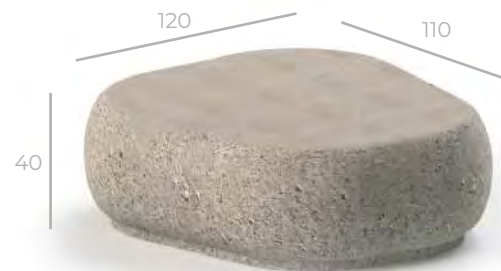


rahu

ascention of the moon



M



XL

“Shadow catcher, but a great one.”

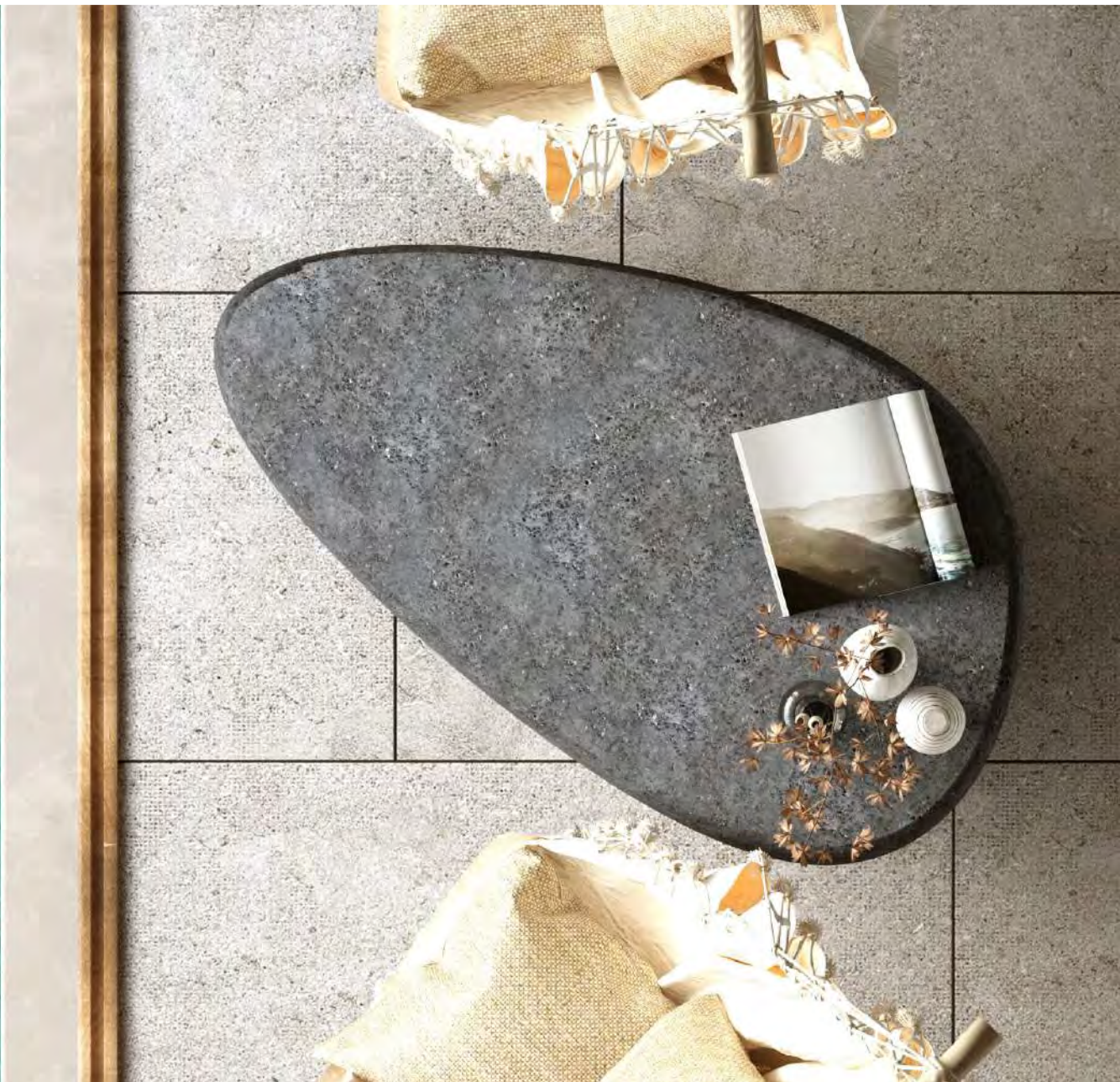
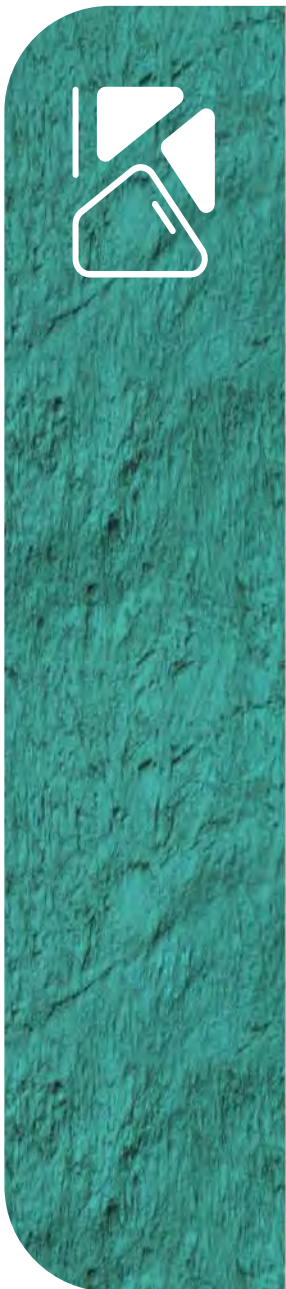
Rahu is one of the nine major celestial bodies (navagraha) in Hindu texts. Unlike most of the others, Rahu is a shadow entity, one that causes eclipses and is the king of meteors.

Rahu represents the ascension of the moon in its precessional orbit around the earth.

राहु

| code | dimensions (in cm) | weight |
|--------------|----------------------|--------|
| M RU6840M | L 68 x W 64 x H 40 | 30 kg |
| XL RU12040XL | L 120 x W 110 x H 40 | 60 kg |





kronus

divine descendants of the sky and the earth



“Between the sky and the earth, there is always **water**.”

In Greek mythology, Kronus was the leader and youngest of the first generation of Titans, the divine descendants of the primordial Gaia and Uranus. He overthrew his father and ruled during the mythological Golden Age, until he was overthrown by his own son Zeus and imprisoned in Tartarus.

Κρόνος

| code | dimensions (in cm) | weight |
|---------------------|---------------------|--------|
| S KS5445S | L 54 x W 47 x H 45 | 25 kg |
| M KS9845M | L 98 x W 97 x H 45 | 60 kg |
| L KS11845L | L 118 x W 74 x H 45 | 54 kg |
| XL KS14645XL | L 146 x W 99 x H 45 | 72 kg |





poseidon
sea breaker



S



M



L



XL

“Bright as day, just as the **sound of the seas.**”

Poseidon was one of the Twelve Olympians in ancient Greek religion and myth, god of the sea, storms, earthquakes and horses.

Ποσειδών

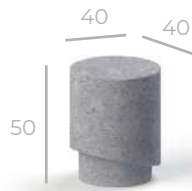
| code | dimensions (in cm) | weight |
|---------------------|----------------------|--------|
| S PD11147S | L 111 x W 118 x H 47 | 18 kg |
| M PD15845M | L 158 x W 117 x H 45 | 24 kg |
| L PD17047L | L 170 x W 108 x H 47 | 26 kg |
| XL PD17347XL | L 173 x W 170 x H 47 | 34 kg |





hades

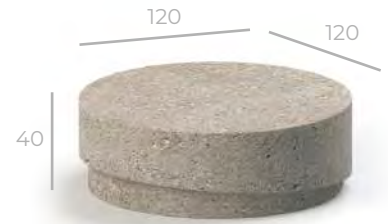
king of the underworld



S



M



L



XL

“Full of soil, **full of darkness** under.”

Hades in the ancient Greek religion and myth, is the god of the dead and the king of the underworld, with which his name became synonymous.

“Αδης”

| code | dimensions (in cm) | weight |
|--------------|----------------------|--------|
| S HA4050S | L 40 x W 40 x H 50 | 6 kg |
| M HA9040M | L 90 x W 90 x H 40 | 12 kg |
| L HA12040L | L 120 x W 120 x H 40 | 21 kg |
| XL HA15040XL | L 150 x W 70 x H 40 | 22 kg |





nabu
patron of literacy



M



L

“Art is something of value, no matter the form.”

Nabu is the ancient Mesopotamian patron god of literacy, the rational arts, scribes and wisdom.

Nabu was worshiped by the Babylonians and the Assyrians. Nabu gained prominence among the Babylonians in the 1st millennium BC when he was identified as the son of the god Marduk.



| code | dimensions (in cm) | weight |
|------------------|--------------------|--------|
| M NB6050M | L 60 x W 60 x H 50 | 8 kg |
| L NB8040L | L 80 x W 80 x H 40 | 12 kg |





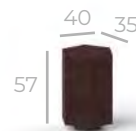
attis
consort of Cybele



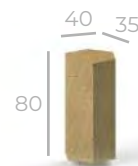
1



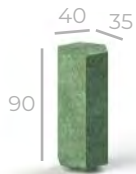
2



3



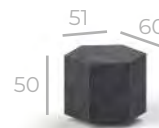
4



5



6



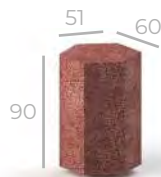
7



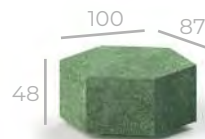
8



9



10



11



12



"ATTIŞ

code

- 1 AS4035411
- 2 AS4035502
- 3 AS4035573
- 4 AS4035804
- 5 AS4035905
- 6 AS5160416
- 7 AS5160507
- 8 AS5160578
- 9 AS5160809
- 10 AS51609010
- 11 AS1004811
- 12 AS1204812

dimensions (in cm)

- L 40 x W 35 x H 41
- L 40 x W 35 x H 50
- L 40 x W 35 x H 57
- L 40 x W 35 x H 80
- L 40 x W 35 x H 90
- L 51 x W 60 x H 41
- L 51 x W 60 x H 50
- L 51 x W 60 x H 57
- L 51 x W 60 x H 80
- L 51 x W 60 x H 90
- L 100 x W 87 x H 48
- L 120 x W 103 x H 48

weight

- 5 kg
- 7 kg
- 9 kg
- 11 kg
- 15 kg
- 8 kg
- 10 kg
- 12 kg
- 14 kg
- 18 kg
- 18 kg
- 21 kg



lada
bringer of spring



S



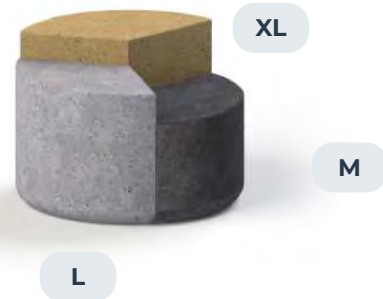
XL



S

XS

XXS



XL

M

L

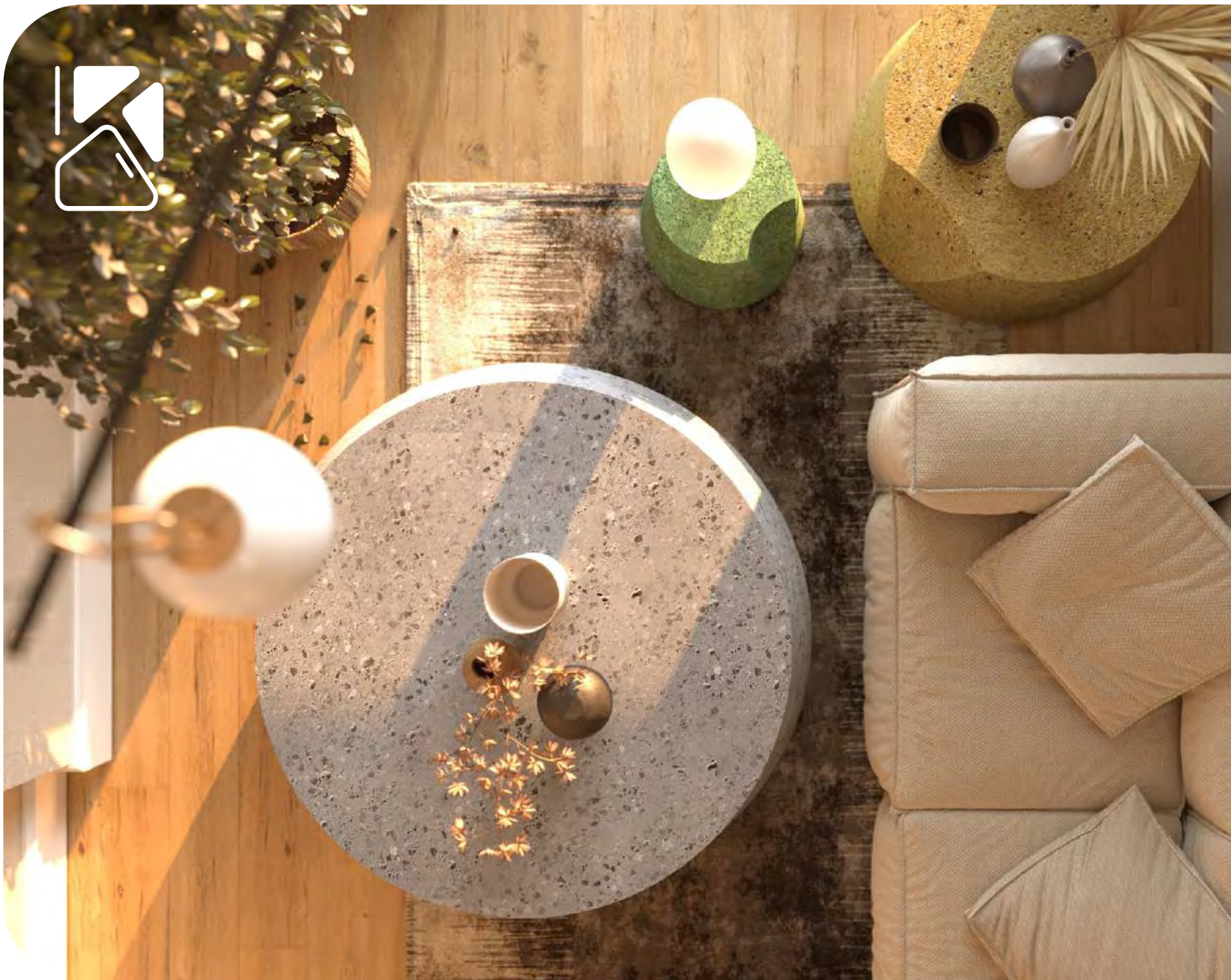


“In the spring, **the atmosphere** is either cold or warm.”

Lada, the Slavic goddess of spring, was worshipped at the end of winter.

лада

| | code | dimensions (in cm) | weight |
|------------|-----------|---------------------|--------|
| XXS | LA3533XXS | L 35 x W 61 x H 33 | 7 kg |
| XS | LA3542XS | L 35 x W 61 x H 42 | 9 kg |
| S | LA3550S | L 35 x W 61 x H 50 | 11 kg |
| M | LA6033M | L 60 x W 104 x H 33 | 18 kg |
| L | LA6042L | L 60 x W 104 x H 42 | 21 kg |
| XL | LA6050XL | L 60 x W 104 x H 50 | 24 kg |



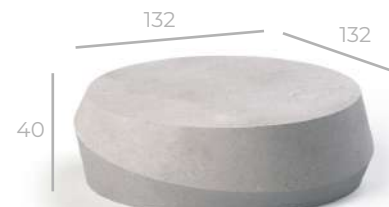
zartus
the silver guardian



S



M



L

“Guardians, protecting their precious.”

Zartus was the Silver Guardian of the Guardians of Eltar, who was second-in-command to Zophram. He later became the Supreme Guardian of Eltar after Zophram.

zartus

code

S ZS4242S

M ZS8240M

L ZS13240L

dimensions (in cm)

L 42 x W 42 x H 42

L 82 x W 82 x H 40

L 132 x W 132 x H 40

weight

9 kg

11 kg

25 kg





mors

personification of death

pot and a side table



“Death **enlightens** the room one last time, before it is too late.”

In ancient Roman myth and literature, Mors (also known as Letum) is the personification of death.

The Latin noun for “death”, mors, genitive mortis, is of feminine gender, but surviving ancient Roman art is not known to depict Death as a woman.

MORS

| | code | dimensions (in cm) | liter | weight |
|---|-----------|----------------------|--------|--------|
| M | MO585347M | L 58.5 x W 53 x H 47 | 72.5 L | 38 kg |
| L | MO696038L | L 69 x W 60 x H 38 | 66 L | 37 kg |



medusa

protectress for the stone



S



M



L

“Turner of those, who stare at them.”

In Greek mythology, Medusa was one of the three monstrous Gorgons, generally described as winged human females with living venomous snakes in place of hair.

Those who gazed into her eyes would turn to stone.

Μέδουσα

| code | dimensions (in cm) | weight |
|------------|----------------------|--------|
| S MD8057S | L 80 x W 80 x H 57 | 24 kg |
| M MD10042M | L 100 x W 100 x H 42 | 30 kg |
| L MD12542L | L 125 x W 125 x H 42 | 45 kg |

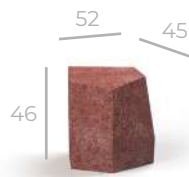




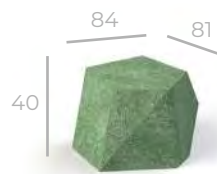
zeus
king of the gods



S



M



L



XL

“In the corner, **watching everything.**”

Zeus is the sky and thunder god in ancient Greek religion, who rules as king of the gods of Mount Olympus.

Zeus is the child of Cronus and Rhea, the youngest of his siblings to be born, though sometimes reckoned the eldest as the others required disgorging from Cronus’s stomach.

Ζεὺς

code

S ZU4055S

M ZU5246M

L ZU8440L

XL ZU13630XL

dimensions (in cm)

L 40 x W 39 x H 55

L 52 x W 45 x H 46

L 84 x W 81 x H 40

L 136 x W 90 x H 30

weight

12 kg

12 kg

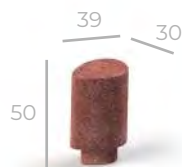
18 kg

30 kg





miryo
music controller



S



M



L



XL

“Having the **shape of the melodies.**”

Miryo is the creator of music and sound in Slavic mythology.

She has all the music notes in her body to come out the people of the world to discover.

МИРЬО

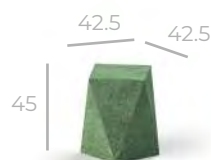
| code | dimensions (in cm) | weight |
|---------------------|---------------------|--------|
| S MY3950S | L 39 x W 30 x H 50 | 18 kg |
| M MY6040M | L 60 x W 60 x H 40 | 33 kg |
| L MY7740L | L 77 x W 73 x H 40 | 45 kg |
| XL MY14240XL | L 142 x W 87 x H 40 | 75 kg |



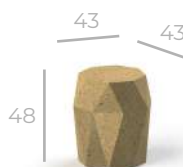


heracles

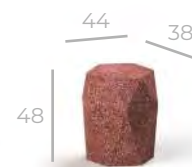
champion of the Olympian order



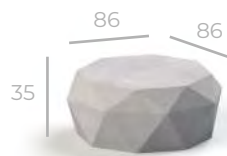
S



M



L



XL



XXL

“In the **middle**, determining the lines.”

Heracles was a divine hero in Greek mythology, the son of Zeus and Alcmene, and the foster son of Amphitryon.

‘Ηρακλής

| code | dimensions (in cm) | weight |
|----------------|------------------------|--------|
| S HK4245S | L 42.5 x W 42.5 x H 45 | 15 kg |
| M HK4348M | L 43 x W 43 x H 48 | 16 kg |
| L HK4448L | L 44 x W 38 x H 48 | 18 kg |
| XL HK8635XL | L 86 x W 86 x H 35 | 36 kg |
| XXL HK14340XXL | L 143 x W 143 x H 40 | 60 kg |

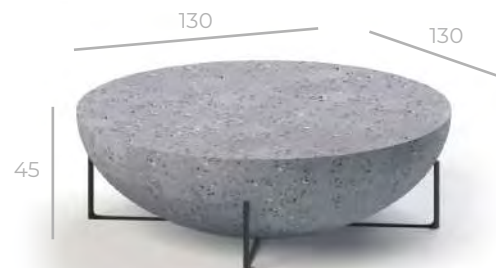




nibru
seeker for the gates



M



L

“**Gates** open to those who seek resting.”

Nibru is the deity of the gates in Mesopotamian mythology.

She controls wheter the gates change their places or, take passengers to the right place or a distant dimension.

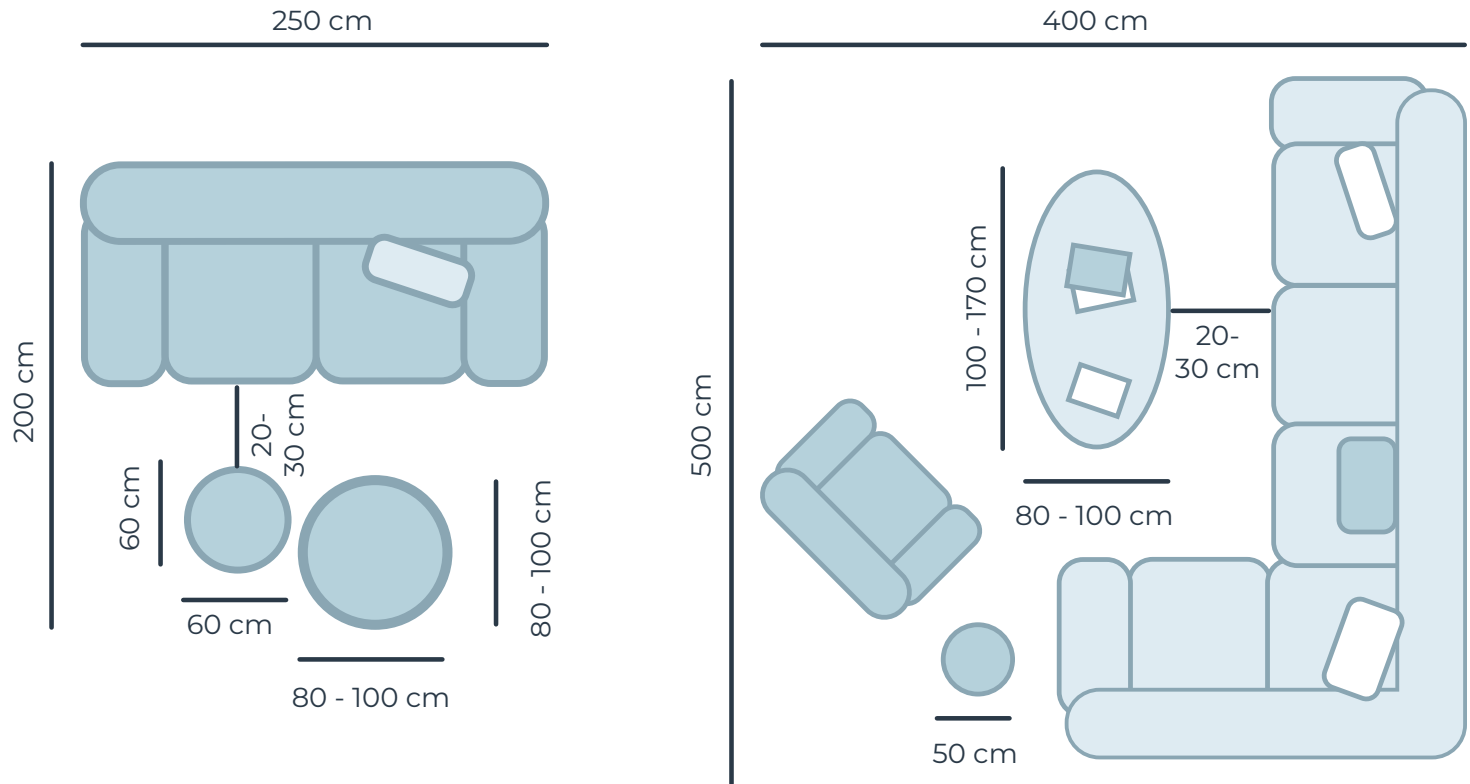


| code | dimensions (in cm) | weight |
|------------|----------------------|--------|
| M NR8033M | L 80 x W 80 x H 33 | 18 kg |
| L NR13045L | L 130 x W 130 x H 45 | 45 kg |





how to choose the best coffee table?



You can relate to these diagrams when you arrange your coffee tables. Also you can decide which sizes are the best option for your living room. These dimensions consists of the sizes that our coffee table designs we have. Thus, this is a guide for you to select the best option from our products in the coffee table category for you.

seats



| | |
|---------|------------|
| athena | 256 |
| minerva | 258 |
| helios | 260 |
| hestia | 262 |
| aion | 264 |





athena

goddess of wisdom, warfare, and handicraft



L

“Goddess of **wisdom**, warfare, and handicraft.”

Athena is an ancient Greek goddess associated with wisdom, warfare, and handicraft who was later syncretized with the Roman goddess Minerva.

Athena was regarded as the patron and protectress of various cities across Greece.

Αθηνά

code

L ATH20072L

dimensions (in cm)

L 200 x W 72 x H 70

weight

120 kg





minerva

art like poetry



M

“The embodiment of **art.**”

Minerva is the Roman goddess of wisdom, justice, law, victory, and the sponsor of arts, trade, and strategy. Minerva is not a patron of violence such as Mars, but of strategic war.

From the second century BC onward, the Romans equated her with the Greek goddess Athena.

minerva

code

M MV707168M

dimensions (in cm)

L 70 x W 71 x H 68

weight

60 kg





helios

changing the sun's brightness



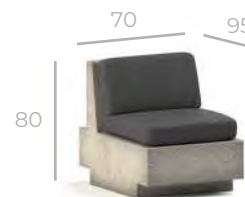
1



2



3



4

“Every hour of the day, changing **the sun’s** brightness.”

In ancient Greek religion and mythology, Helios is the god and personification of the Sun.

Helios is often depicted in art with a radiant crown and driving a horse-drawn chariot through the sky.

‘Ηέλιος

code

- 1 HLS170801
- 2 HLS170802
- 3 HLS95803
- 4 HLS70804

dimensions (in cm)

- L 170 x W 95 x H 80
- L 170 x W 95 x H 80
- L 95 x W 95 x H 80
- L 70 x W 95 x H 80

weight

- 102 kg
- 102 kg
- 65 kg
- 55 kg





hestia
hearth, fireplace, altar



XL

“Pass the day, when there is **fire.**”

In ancient Greek religion and mythology, Hestia is the virgin goddess of the hearth, the right ordering of domesticity, the family, the home, and the state.

In myth, she is the firstborn child of the Titans Cronus and Rhea, and one of the Twelve Olympians.

Ἑστία

code
XL HST18075XL

dimensions (in cm)
L 180 x W 180 x H 75

weight
140 kg





aion

travelling through time



“Travelling through **time**, with everything he owns.”

Aion is a Hellenistic deity associated with time, the orb or circle encompassing the universe, and the zodiac.

The “time” which Aion represents is perpetual, unbounded, ritual, and cyclic: The future is a returning version of the past.

Αἰών

code

1 AIN95901

2 AIN90902

3 AIN80903

4 AIN95904

dimensions (in cm)

L 95 x W 90 x H 75

L 90 x W 90 x H 75

L 80 x W 90 x H 75

L 95 x W 90 x H 75

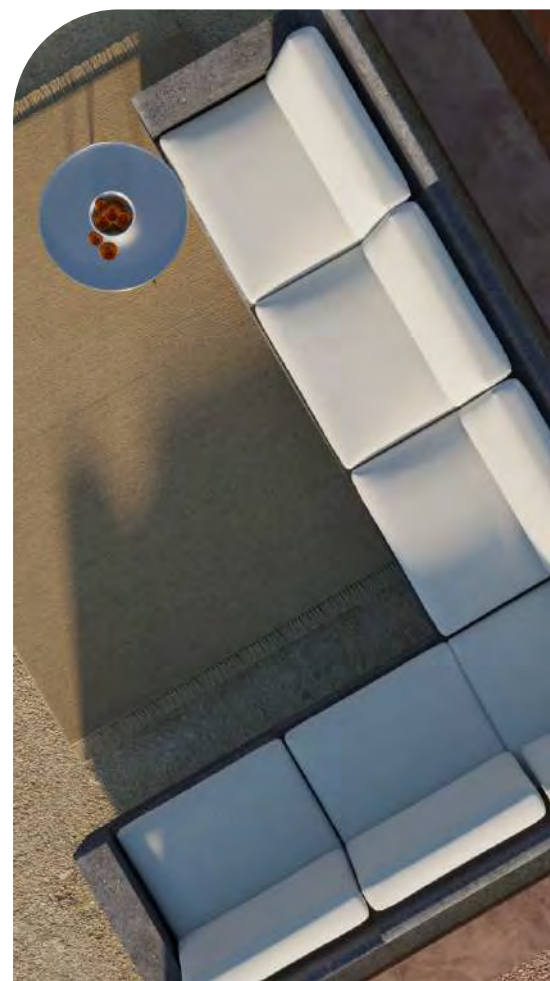
weight

50 kg

55 kg

45 kg

50 kg



stools



| | |
|-------------|------------|
| eros | 268 |
| sweet stool | 270 |
| round stool | 271 |
| philip | 272 |
| sargen | 273 |
| rusa | 274 |





eros

embodiment of love



M

“Embodiment of **love.**”

In Greek mythology, Eros is the Greek god of love and sex.

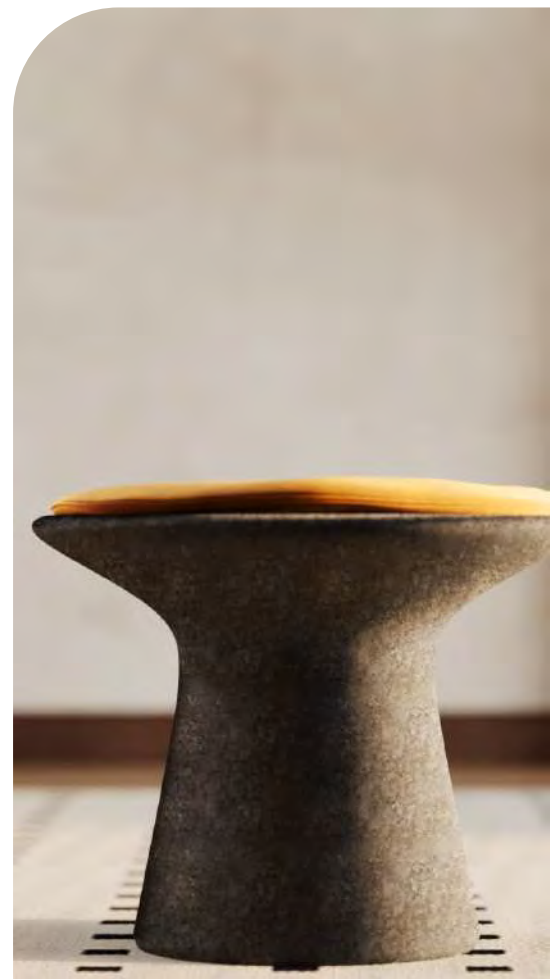
In the earliest account, he is a primordial god, while in later accounts he is described as one of the children of Aphrodite and Ares and, with some of his siblings, was one of the Erotes, a group of winged love gods.

“Eρως

code
M ERS5644M

dimensions (in cm)
L 56 x W 56 x H 44

weight
20 kg





sweet stool

as candy

Sweet stool is a stool in the shape of a smooth candy.

It can be used in wherever you feel soft for yourself.



SS554847

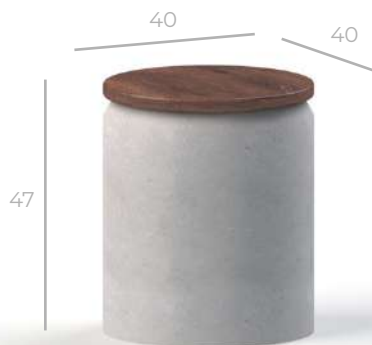
15 kg

270



round stool

as curvy



RS404047

12 kg

Round stool is the stool for your tiniest and the biggest areas.

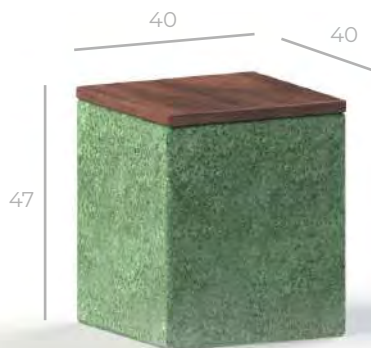
It can take up less space, but many of them will fill a room.



philip
hunter, the dragon

Philip was a winged creature in ancient Celtic Britons.

It was a powerful dragon, who terrorised villages for the Celts to ensure the ruledom of theirs.



PH404047

13 kg

272



sargen

time lord



SN454550

17 kg

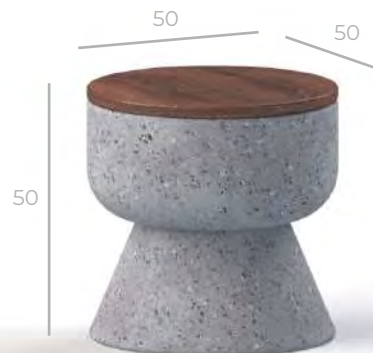
Sargen was the creature of time in Slavic mythology. Though he was not a god or a deity, he was feared by them, because he had the control of the time continuum.



rusa

defeater of all

Rusa was a King of Urartu. The Assyrians repeatedly invaded Urartu, thus forcing Rusa to spend the early years of his reign fighting the forces of Assyria.



RS505050

15 kg



benches



nirvana
asgard

278
279





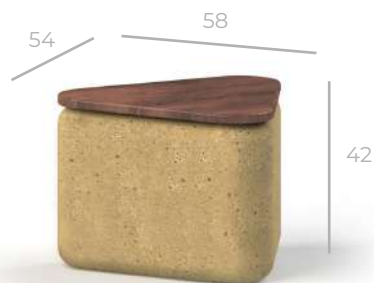
nirvana

ultimate state of soteriological release



NN1326342

32 kg



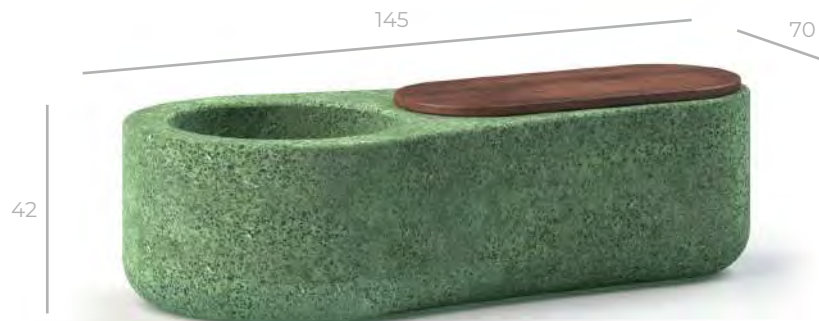
NN585442

18 kg

278

asgard

fortified home



279

AG1457042

52 kg

**night
stands**



| | |
|---------|------------|
| retus | 282 |
| hoyer | 283 |
| sementa | 284 |
| dragen | 285 |
| lempol | 286 |

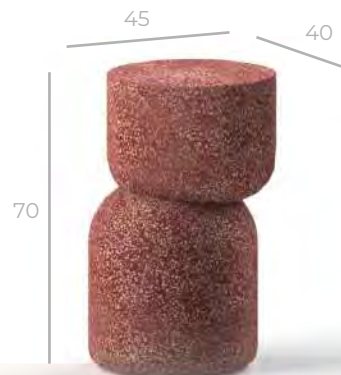




retus
creator of science

Too little science leads away from God, while too much science leads back to Him.

Retus, the god of the science.



RS454070

22 kg

282



hoyer

temptation of death

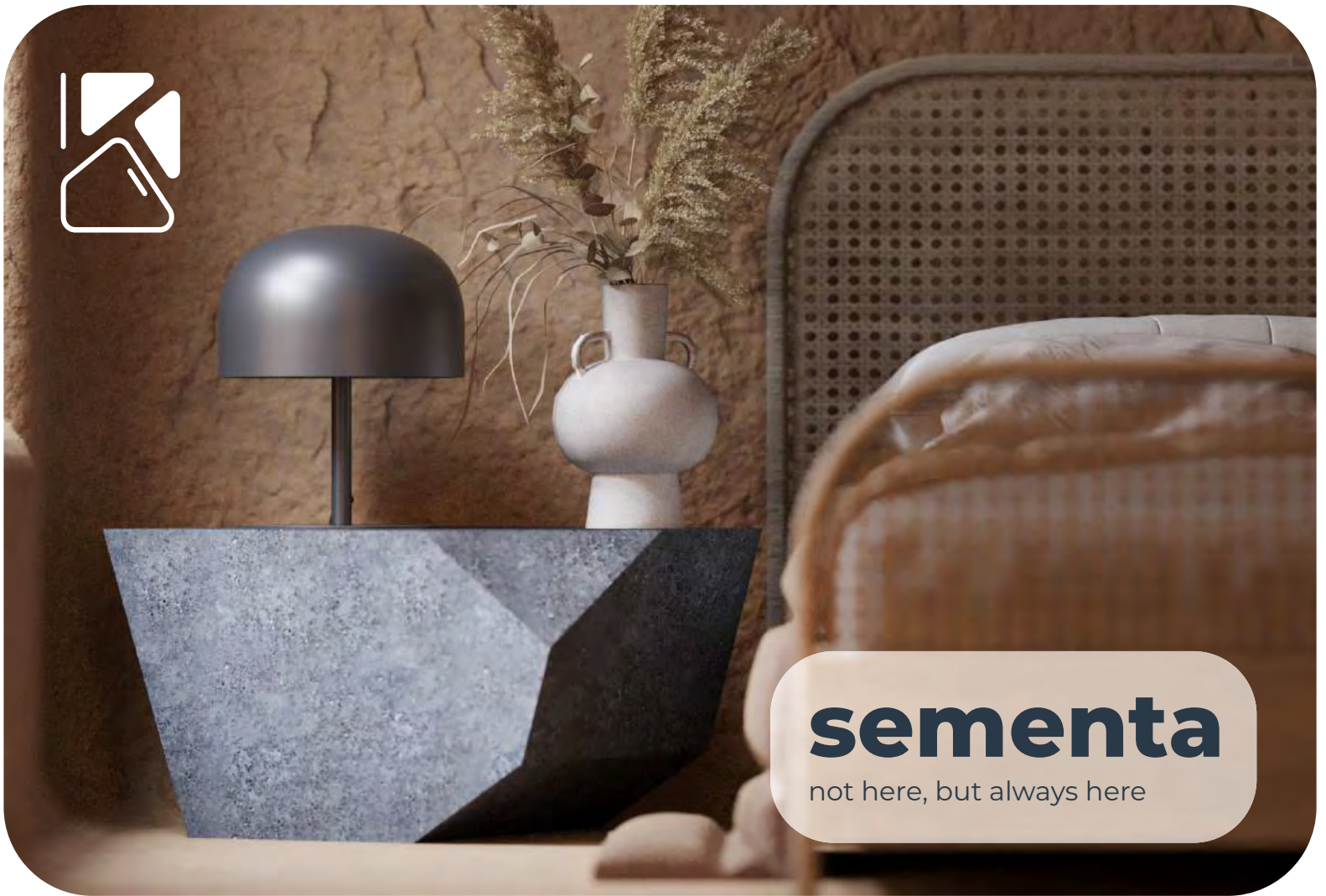


HR454060

20 kg

Hoyer is a born-again, spirit-filled believer.

He has the power to resurrect herself over and over again. Though she is not a goddess, she is a powerful being.

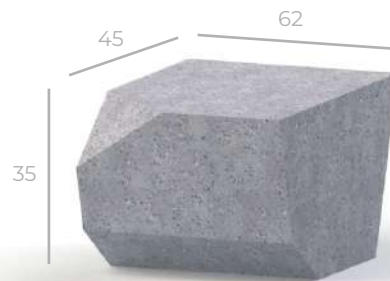


sementa

not here, but always here

Told by the gods,
Sementa is a true follower
of them.

Nobody have ever seen
her except Chaos, she is
repeatedly said to talk to
gods though.



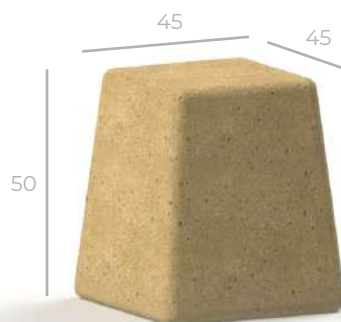
ST456235

24 kg



dragen

controller of fire



DN454550

20 kg

Dragen is the deity of the creatues.

He can control every creature's mind, but he does not see himself as a god.

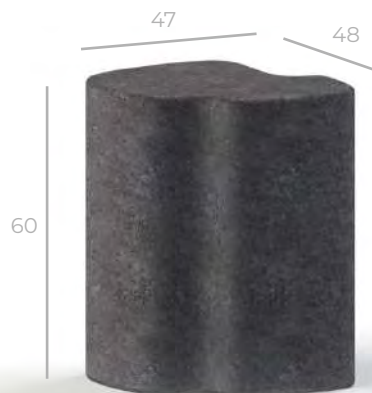


lempol

sound of the drums

Whenever a melody is heard, everyone awaits for her. But she never shows up.

She is a legend in the eyes of many gods to created all sounds.



LL474860

18 kg

286



tv units



| | |
|-----------|------------|
| arsu | 290 |
| pandora | 292 |
| cassandra | 294 |
| hera | 296 |
| stella | 298 |
| anitta | 299 |
| kleopatra | 300 |
| armin | 301 |





arsu

between the evening stars



“Between the **evening stars.**”

Arsu was a god worshipped in Palmyra, Syria.

A deity known from Syrian and northern Arabian lands, being sometimes in male or in female (most often) representation. Arsu was connected with the evening star.

وسرا

code

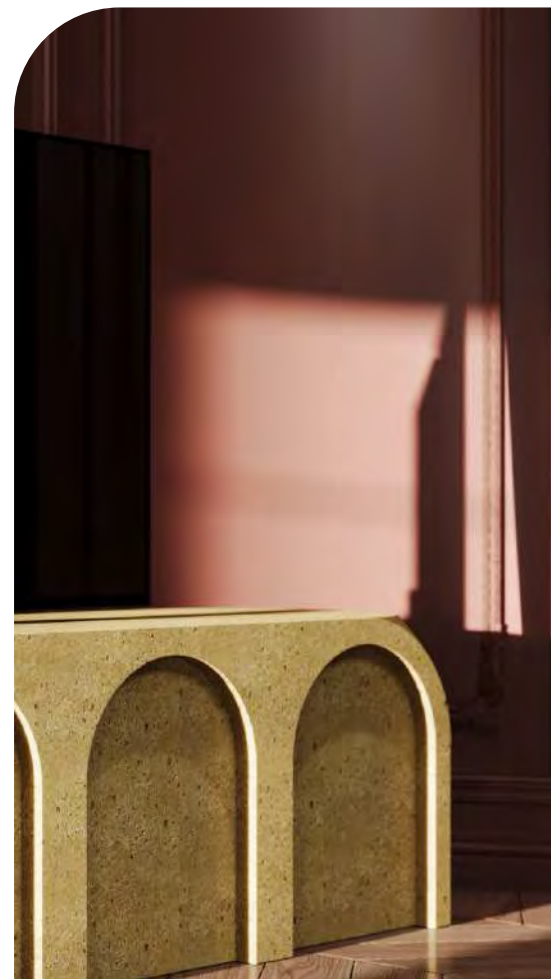
L ARS25060L

dimensions (in cm)

L 250 x W 60 x H 60

weight

80 kg

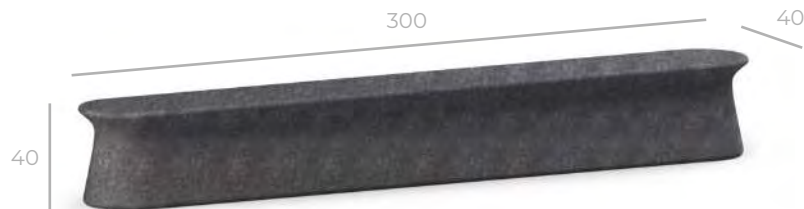




pandora
inside, there is all the evil



L



XL

“Inside the **pandora**, there is all **the evil** in the world.”

In Greek mythology, Pandora was the first human woman created by Hephaestus on the instructions of Zeus.

Pandora opened a jar (pithos) (commonly referred to as “Pandora’s box”) releasing all the evils of humanity.

Πανδώρα

code

L PND22540L

XL PND30040XL

dimensions (in cm)

L 225 x W 40 x H 40

L 300 x W 40 x H 40

weight

75 kg

90 kg





cassandra

beautiful priestess



L



XL

“Beautiful priestess.”

Cassandra, in Greek mythology was a beautiful Trojan priestess dedicated to the god Apollo and fated by him to utter true prophecies but never to be believed. In modern usage her name is employed as a rhetorical device to indicate a person whose accurate prophecies, generally of impending disaster, are not believed.

Κασσάνδρα

| code | dimensions (in cm) | weight |
|---------------|---------------------|--------|
| L CSN21050L | L 210 x W 88 x H 50 | 75 kg |
| XL CSN31050XL | L 310 x W 88 x H 50 | 90 kg |





hera

goddess of women



L

“Goddess of women.”

In ancient Greek religion, Hera is the goddess of marriage, women and family, and the protector of women during childbirth.

In Greek mythology, she is queen of the twelve Olympians and Mount Olympus, sister and wife of Zeus.

“Hpa

code

L HR1804047

dimensions (in cm)

L 180 x W 40 x H 47

weight

60 kg





stella

brighter sun



SL2004550

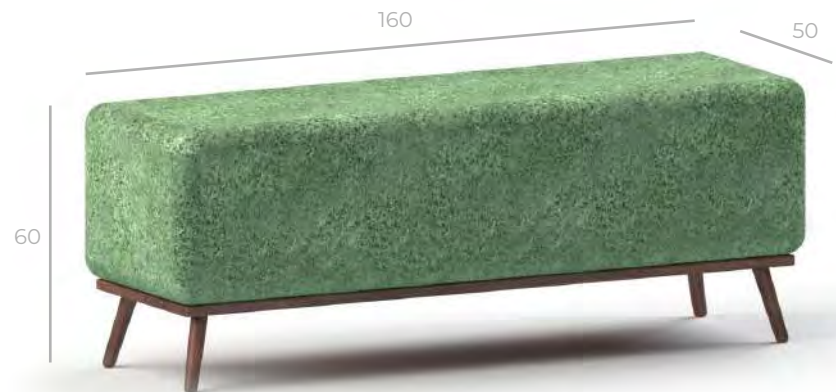
75 kg

298



anitta

shining star



299

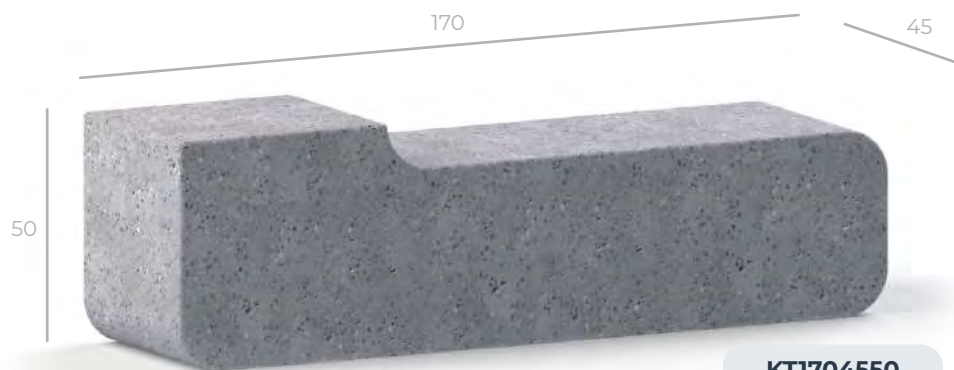
ATTI605060

45 kg



kleopatra

horror wind



KTI1704550

48 kg

300



armin
glowing parlor



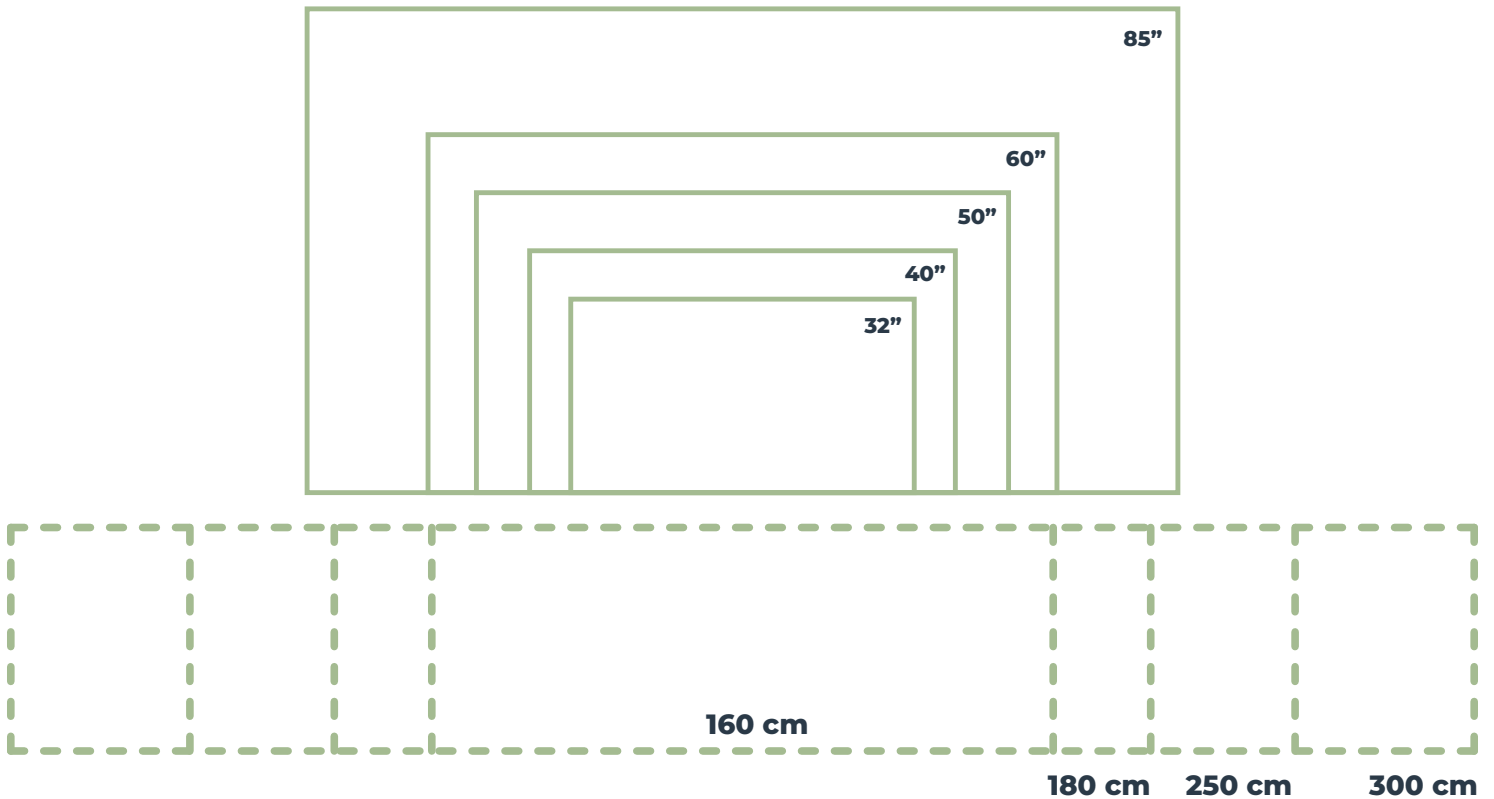
301

ARM1804035

54 kg



how to choose the best tv unit?



You can relate to these diagrams when you arrange your tv units. Also you can decide which sizes are the best option for your living room. These dimensions consists of the sizes that our tv unit designs we have. Thus, this is a guide for you to select the best option from our products in the tv unit category for you.

Copyright © 2024.

All the design in this catalog are the
property of Kalif Design.





KALIF
design

A SQUARED:
+1 786 501 8808

design@asquareddesignstudio.com

[@asquareddesignstudio](https://www.instagram.com/asquareddesignstudio)

www.asquareddesignstudio.com



A SQUARED