



Sphere

Fire Pit

Product Details

Natural Stone
Packed 1 piece per carton
Eco Friendly
Stain Resistant
Water Resistant
Available in 8 Colors
10 - 12 Weeks

Dimensions

SH9040L: 35.5in x 35.5in x 15.5in
90cm x 90cm x 40cm

This item is handcrafted so there may be texture differences in each product. No coloring agent is used, it does not peel or fade. Highly resistant to impacts and weight, thanks to its production method and material. It is more durable than cast concrete, industrial wood, glass, ceramic or plastic products.

Weight

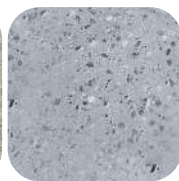
SH9040L: 55lb | 25kg



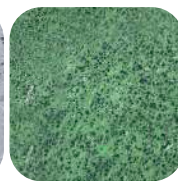
Anthracite



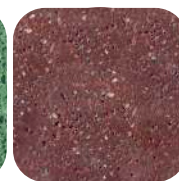
Cream



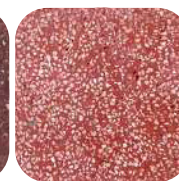
Gray



Green



Maroon



Red



White



Yellow

kalif

Instructions

Since this product is flammable, the instructions for use must be followed.

What is included?

- Burner
- Decorative Rocks
- Glass & handles
- Flat fire extinguisher



-
- Do not use any fuel other than bioethanol.
 - Put a minimum of 1 L of fuel into the fuel tank of the fire pit.
 - To prevent the fuel from causing damage to the product surface, it is recommended to use a funnel when filling the fuel reservoir. In case of any fuel splashes on the product surface, it is advisable to clean it as soon as possible.
 - If used outdoors, keep the product covered to prevent the fuel tank of the fire pit from getting water.
 - Do not touch the glass and metal parts while the fire is burning.
 - Do not pour fuel directly onto the fire while it is burning.
 - Do not carry the product while the fire is burning.
 - Extinguish the fire only with "Fire Extinguisher".
 - Never pour water on the fire.

Fuel capacity and heat area

- Design Burner 40cm
- Fuel capacity: 10.0 L
- Heat field: 60.0 m²