



## Diana

## Planters

### Product Details

Natural Stone  
Packed 1 piece per carton  
Eco Friendly  
Stain Resistant  
Water Resistant  
Available in 8 Colors  
10 - 12 Weeks

This item is handcrafted so there may be texture differences in each product. No coloring agent is used, it does not peel or fade. Highly resistant to impacts and weight, thanks to its production method and material. It is more durable than cast concrete, industrial wood, glass, ceramic or plastic products.

### Dimensions

DN6040L: 23.5in x 23.5in x 15.5in  
60cm x 60cm x 40cm  
DN9068XL: 35.5in x 35.5in x 27in  
90cm x 90cm x 68cm  
DN12091XXL: 47in x 47in x 36in  
120cm x 120cm x 91cm

### Weight

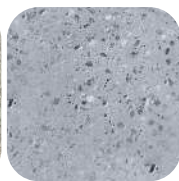
DN6040L: 56lb | 25.3kg  
DN9068XL: 132lb | 60kg  
DN12091XXL: 291lb | 132kg



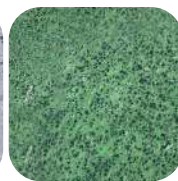
Anthracite



Cream



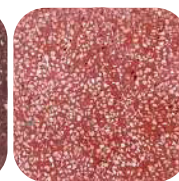
Gray



Green



Maroon



Red



White



Yellow

# kalif