



## Cardea

## Coffee Table

### Product Details

Natural Stone  
Packed 1 piece per carton  
Eco Friendly  
Stain Resistant  
Water Resistant  
Available in 8 Colors  
10 - 12 Weeks

### Dimensions

C5740S: 22.5 x 22.5 x 15.5in  
57 x 57 x 40cm  
C9740M: 38 x 38 x 15.5in  
97 x 97 x 40cm  
C12540L: 49 x 49 x 15.5in  
125 x 125 x 40cm

This item is handcrafted so there may be texture differences in each product. No coloring agent is used, it does not peel or fade. Highly resistant to impacts and weight, thanks to its production method and material. It is more durable than cast concrete, industrial wood, glass, ceramic or plastic products.

### Weight

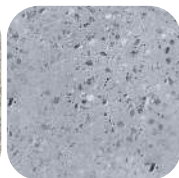
C5740S: 33lb | 15kg  
C9740M: 79lb | 36kg  
C12540L: 132lb | 60kg



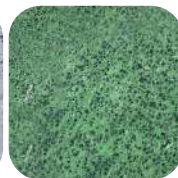
Anthracite



Cream



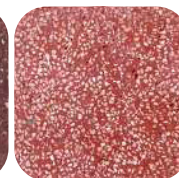
Gray



Green



Maroon



Red



White



Yellow

# kalif