

Ash

Planters

Product Details

Natural Stone
 Packed 1 piece per carton
 Eco Friendly
 Stain Resistant
 Water Resistant
 Available in 8 Colors
 10 - 12 Weeks

This item is handcrafted so there may be texture differences in each product. No coloring agent is used, it does not peel or fade. Highly resistant to impacts and weight, thanks to its production method and material. It is more durable than cast concrete, industrial wood, glass, ceramic or plastic products.

Dimensions

AH6650S: 26in x 26in x 19.5in
 66.5cm x 66.5cm x 50cm
 AH5360M: 21in x 21in x 23.5in
 53cm x 53cm x 60cm
 AH7180L: 28in x 28in x 31.5in
 71cm x 71cm x 80cm
 AH8680XL: 34in x 34in x 31.5in
 86.5cm x 86.5cm x 80cm
 AH88100XXL: 34.5in x 34.5in x 39.5in
 88cm x 88cm x 100cm

Weight

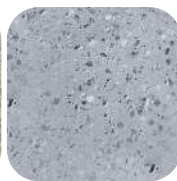
AH6650S: 61lb | 27.5kg
 AH5360M: 40lb | 18kg
 AH7180L: 86lb | 39kg
 AH8680XL: 111lb | 50.4kg
 AH88100XXL: 176lb | 80kg



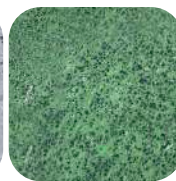
Anthracite



Cream



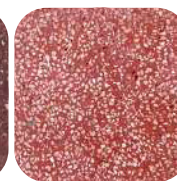
Gray



Green



Maroon



Red



White



Yellow

kalif